

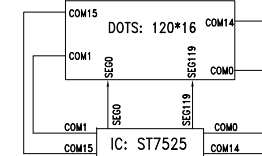
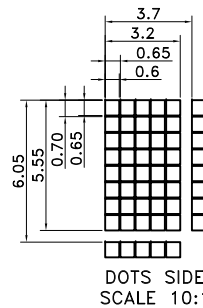
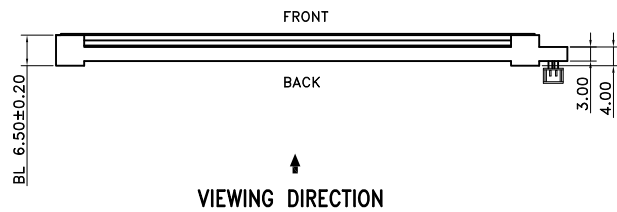
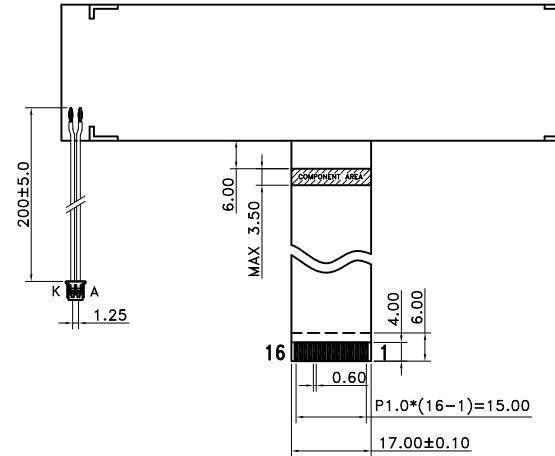
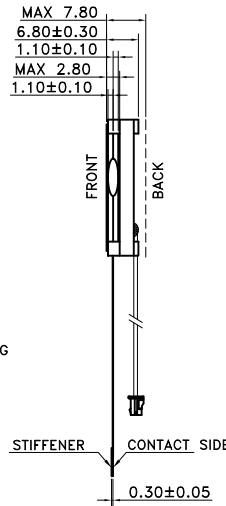
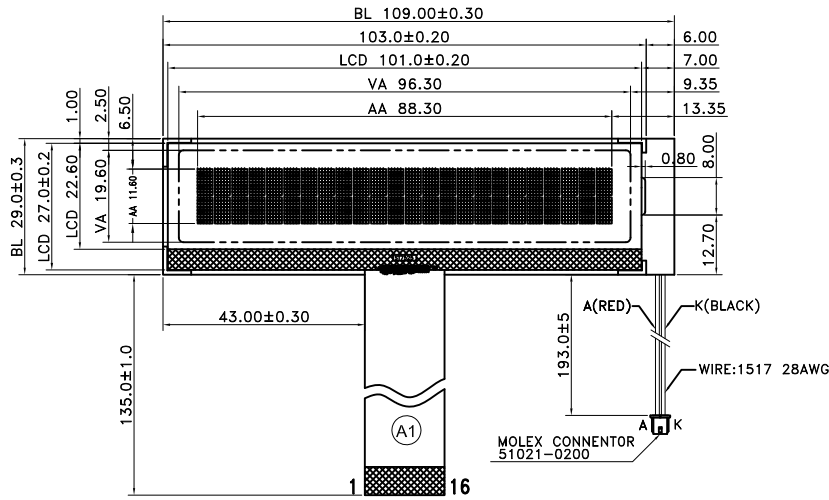
Revised Record

1.0

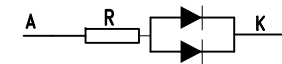
New issue

2015-03-19

INTERFACE	
1	VSS
2	VDD
3	/CS
4	A0
5	RWR
6	ERD
7	DB0
8	DB1
9	DB2
10	DB3
11	DB4
12	DB5
13	DB6
14	DB7
15	RSTB
16	NC



COM & SEG LAYOUT



BLACKLIGHT CIRCUIT

NOTES:

- 01. DISPLAY TYPE: FSTN/POSITIVE(BLACK_WHITE)/TRANSFLECTIVE RoHS
- 02. OPERATING VOLTAGE: VOP=7.0V,VDD=3.3V
- 03. OPERATING TEMPERATURE: -20°C~+70°C
- 04. STORAGE TEMPERATURE: -30°C~+80°C
- 05. DRIVE MODE: 1/32DUTY,1/6BIAS
- 06. VIEWING DIRECTION: 6:00
- 07. DRIVE IC: ST7525(8080_INTERFACE)
- 08. CONNECTOR: ZEBER
- 09. BACKLIGHT: 2PCS_WHITE_LED,IF=30MA,VF=3.3V
- 10. CUSTOMER'S PART ID: BLAZE_STANDARD_PRODUCT

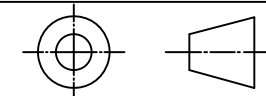
BLAZE Blaze Display Technology Co.,Ltd.

DESIGNED BY: BDT-21

BCG2402-04-SERIES

VERSION: 1.0

CHECKED BY: BDT-09



PAGE 1 OF 1

APPROVED BY: BDT-02

UNIT: mm

Website: <http://www.blazedisplay.com>

DATE: 2015-03-19