


Features:

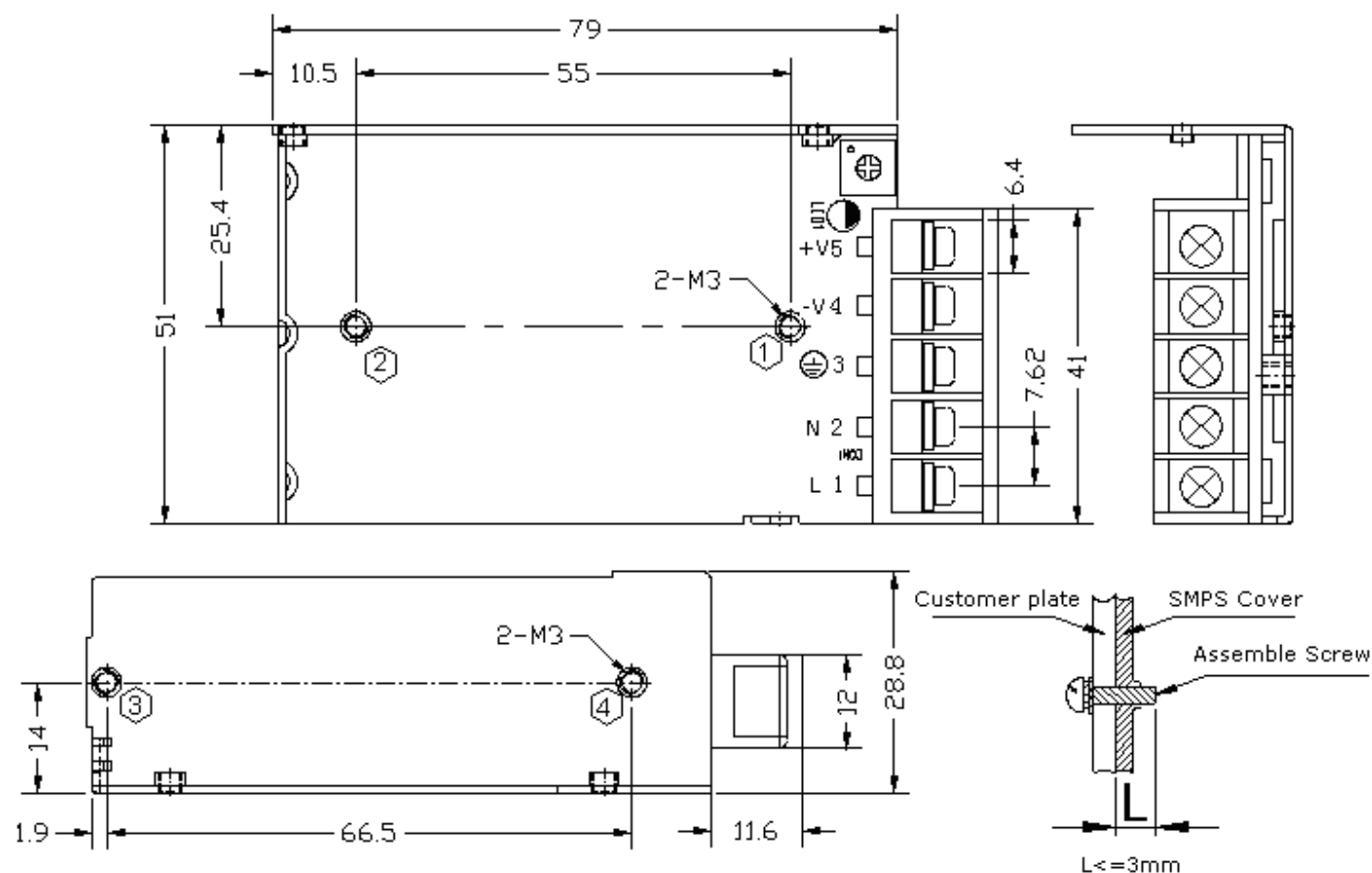
- No Load power consumption<0.5W
- Universal AC input range
- Miniature size,high power density,high efficiency,long life and high reliability
- Withstand 300VA surge input for 5 sec.
- Output protections: OLP/OVP/SCP
- Wide operating ambient temp (-25℃~70℃), full load up to 70℃
- All using 105℃ long life electrolytic capacitors.
- 100% full load burn-in test
- PCB soldering side with conformal coating
- Suitable for critical applications
- 3 years warranty

SPECIFICATION

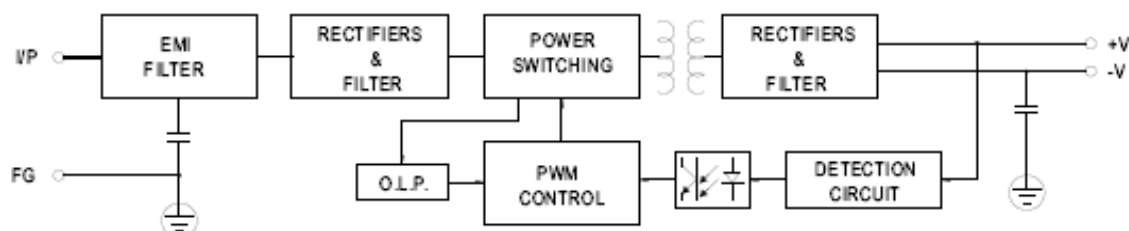
MODEL			PD-15-3.3	PD-15-5	PD-15-12	PD-15-15	PD-15-24
OUTPUT	DC Output		3.3V	5V	12V	15V	24V
	Rated Current		4A	3A	1.3A	1A	0.7A
	Current Range	Note 1	0~4A	0~3A	0~1.3A	0~1.0A	0~0.7A
	Ripple and Noise Note 2	-25~70℃	<50mV	<50mV	<120mV	<120mV	<120mV
	Voltage ADJ. Range		3.0~3.6V	4.4~5.5V	10.0~13.0V	13.8~16.1V	20.7~26.7V
	Voltage Accuracy		±2.0%	±2.0%	±1.0%	±1.0%	±1.0%
	Line Regulation		±0.5%	±0.5%	±0.5%	±0.5%	±0.5%
	Load Regulation		±2.0%	±2.0%	±1.0%	±1.0%	±1.0%
	Set-up Time		<2.0S (115Vac input, Full load); <1.0S (230Vac input, Full load)				
	Hold up Time		>10mS(115Vac input, Full load); >20mS(230Vac input, Full load)				
	Temperature Coefficient		±0.03%/℃				
	Overshoot and Undershoot		<5.0%				
	INPUT	Voltage Range		88Vac~264Vac,124~370Vdc			
Frequency Range		47Hz~63Hz					
Efficiency (Typical)		115Vac input	70%	76%	80%	82%	84%
		230Vac input	71%	78%	82%	83%	85%
AC Current (max.)		0.7A	0.7A	0.7A	0.7A	0.7A	
Inrush Current (Typical)		20A@115Vac 40A@230Vac Cold start					
Leakage Current		Input—output:<0.25mA Input—PG:<3.5mA					
PROTECTION	Over Load		105%~150% of rated output current, Hiccup mode,auto recovery				
	Over Voltage		105%~150% of rated output voltage, Constant Voltage				
	Shorted Circuit		Long-term mode, auto recovery				
ENVIRONMENT	Operating amb. Temp. & Hum.		-25℃~70℃; 20%~90%RH No condensing				
	Storage Temp. & Hum.		-40℃~85℃; 10%~95%RH No condensing				
SAFETY & EMC Note 3	Safety Standards		UL60950-1; EN60950-1: 2006				
	Withstand Voltage		Primary-Secondary:3.0KVac; ≤10mA .Primary-PG:1.5KVac; ≤10mA. Secondary-PG:0.5KVDC;≤10mA.				
	Isolation Resistance		≥100M ohms				
	EMI Conduction&Radiation		Compliance to EN55022(CISPR22)ClassB				
	Harmonic Current		Compliance to EN61000-3-2,-3				
	EMS Immunity		Compliance to EN61000-4-2,3,4,5,6,8,11;ENV50204,light industry level,criteriaA				
OTHERS	MTBF (MIL-HDBK-217F)		More than 200,000Hrs (25℃, Full load)				
	Dimension (L*W*H)		79×51×28mm				
	Packing		48PCS/CTN, 10.4KGS, 0.03CBM				
	Cooling method		Cooling by free air convection				
NOTE	1. All parameters NOT specially mentioned are measured at rated input, rated load and 25℃ of ambient temperature. 2. Measured at 20MHz of bandwidth by using a 12" twisted pair-wire terminated with a 0.1 uF & 47uF parallel capacitor. 3. The SPS is considered a component which will be installed into final equipment. The equipment must be re-confirmed that it still meets EMC directives. 4. Powerld offer accessories for Din-35 rail bar. Please contact sales staff for details.						

■ Mechanical Specification

Unit: mm



■ Block Diagram



■ Derating Curve

