



■ Features:

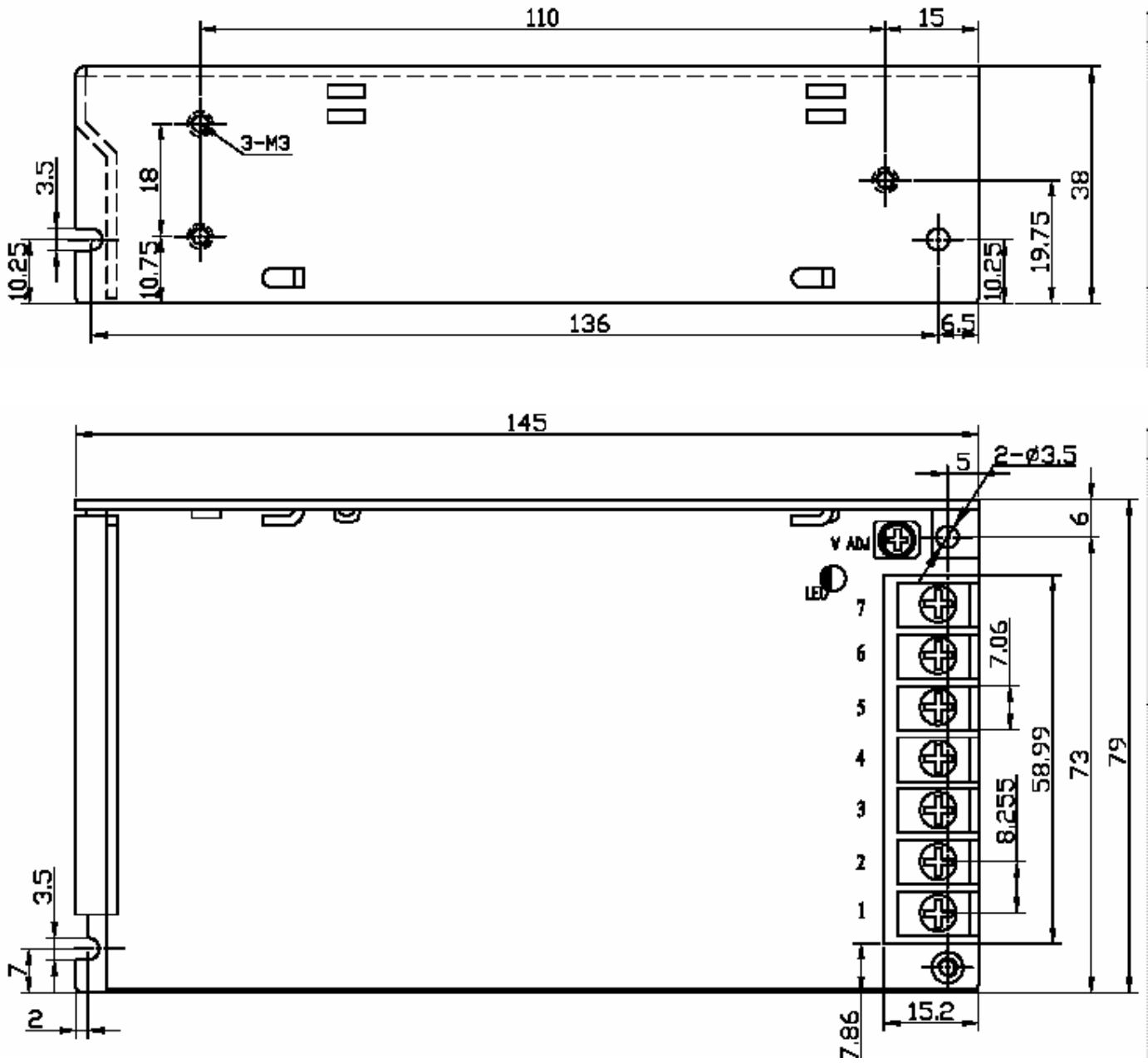
- High Efficiency, and High reliability
- Output protections: SCP/OVP/OPP/OLP
- Wide operating ambient temperature (0 ~50)
- All using 105 long life electrolytic capacitors.
- 100% full load burn-in test
- 2 year warranty

SPECIFICATION

MODEL		GZM-H40S5	GZM-H40S5.6	GZM-H40S6.7	GZM-H40S8	GZM-H40S9	GZM-H40S12
OUTPUT	DC Output	5V	5.6V	6.7V	8V	9V	12V
	Rated Current	8A	7A	5.0A	5A	5A	3.3A
	Current Range	0~8A	0~7A	0~5.0A	0~5A	0~5A	0~3.3A
	Ripple and Noise <small>Note 2</small>	60mV	56mV	70mV	80mV	100mV	120mV
	Voltage ADJ. Range	± 5% of rated output voltage					
	Voltage Accuracy	± 1.0%	± 1.0%	± 3.0%	± 3.0%	± 3.0%	± 3.0%
	Line Regulation	± 1.0%	± 0.5%	± 0.5%	± 0.5%	± 0.5%	± 0.5%
	Load Regulation	± 1.0%	± 1.0%	± 2.0%	± 2.0%	± 3.0%	± 2.0%
	Set-up Time	<=1.0S (220Vac input, Full load)					
	Hold up Time	>=20mS(220Vac input, Full load)					
	Temperature Coefficient	± 0.03%/					
	Overshoot and Undershoot	<5.0%					
INPUT	Voltage Range	176Vac~264Vac					
	Frequency Range	47Hz~63Hz					
	Efficiency (Typical)	74%	72%	75%	75%	75%	75%
	AC Current (max.)	0.65A	0.7A	0.8A	0.6A	0.65A	0.8A
	Inrush Current (Typical)	40A@220Vac Cold start					
	Leakage Current	<3.5mA					
PROTECTION	Over Current	105%~180% of rated output current, auto recovery					
	Over Voltage	110%~170% of rated output voltage, auto recovery					
	Shorted Circuit	Long-term mode, auto recovery					
ENVIRONMENT	Operating amb. Temp. &	0 ~50 ; 20%~90%RH No condensing					
	Storage Temp. & Hum.	-25 ~85 ; 10%~95%RH No condensing					
SAFETY & EMC	Safety Standards	GB4943; EN60950					
	Withstand Voltage	Primary-Secondary:1.5KVac; Primary-PG:1.5KVac; Secondary-PG:0.5KVDC					
	Isolation Resistance	100M ohms					
OTHERS	MTBF (MIL-HDBK-217F)	More than 100,000Hrs (25 , Full load)					
	Dimension (L*W*H)	145× 78× 38mm					
	Connection	7P/8.025mm barrier terminal block					
	Cooling method	Cooling by free air convection					
NOTE	1. All parameters NOT specially mentioned are measured at rated input, rated load and 25 of ambient temperature. 2. Measured at 20MHz of bandwidth by using a 12" twisted pair-wire terminated with a 0.1 uF & 47uF parallel capacitor.						

■ Mechanical Specification

Unit: mm



Pin No.	Assignment
1	AC-L
2	AC-N
3	F.G
4	DC output -V
5	DC output +V