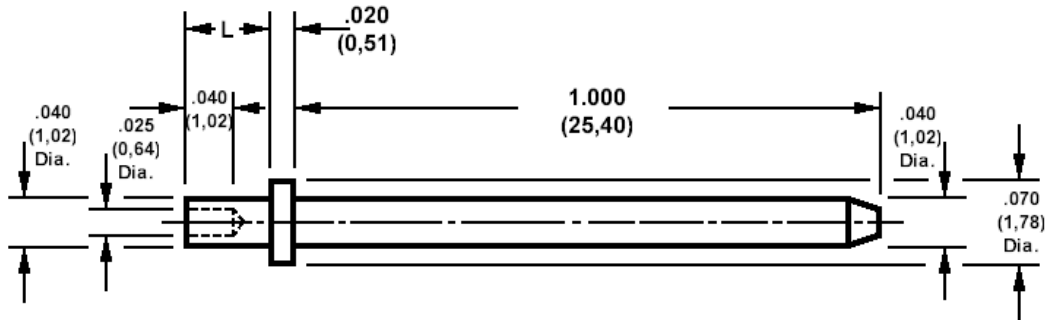


## 460-2948 Swage mount, .040 (1,02) diameter pin

Recommended mounting hole .042 (1,09) ± .001 (0,03).



### How to order code

**460-2948-XX-YY-00**

Basic Part No XX = L dimension, YY = Plating Finish

### DIMENSIONS (XX)

| Basic Part Number | (XX) | L           | For Board Thickness |
|-------------------|------|-------------|---------------------|
| 460-2948          | -01  | .051 (1,30) | .031 (0,79)         |
|                   | -02  | .081 (2,08) | .061 (1,57)         |
|                   | -03  | .113 (2,87) | .094 (2,39)         |

### MATERIALS

| Component | Material | Finish (-03)     | Finish (-04)            |
|-----------|----------|------------------|-------------------------|
| Pin       | Brass    | Gold over Nickel | Electro-tin over copper |

### SWAGE TOOLING

| Recommended Swaging Tools:- |                   |
|-----------------------------|-------------------|
| Anvil                       | 435-6468-01-00-00 |
| Flare Punch                 | 435-6690-01-00-00 |
| Roll Punch                  | 435-6642-01-00-00 |

Due to pin length, these pins cannot be swaged using bench press 435-3803-01-00-00