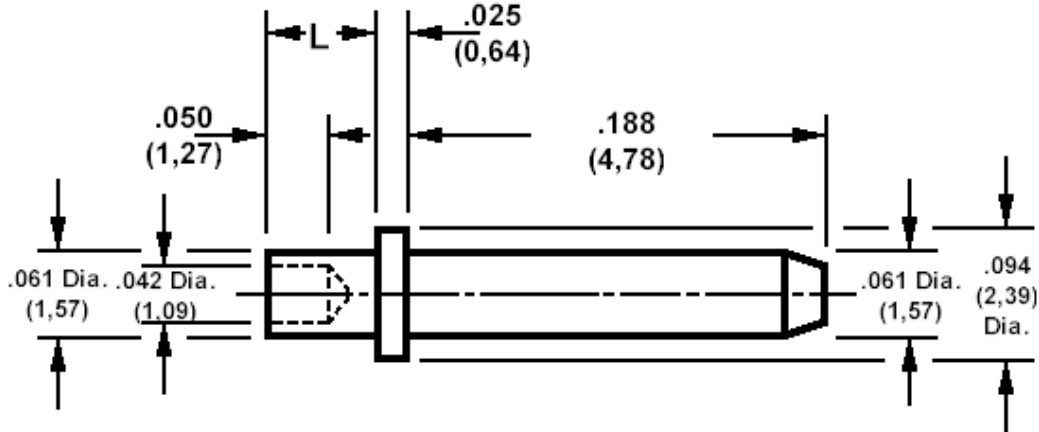


460-3342 Swage mount, .061(1,57) diameter pin

Recommended mounting hole .066 (1,70) ± .002 (0,05).



How to order code

460-3342-XX-YY-00

Basic Part No XX = L dimension, YY = Plating Finish

MATERIALS

Component	Material	Finish (-03)	Finish (-04)
Pin	Brass	Gold over Nickel	Electro-tin over copper

DIMENSIONS (XX)

Basic Part Number	(XX)	L	Board Thickness
460-3342	-01	.053 (1,35)	.031 (0,79)
	-02	.083 (2,13)	.061 (1,57)
	-03	.115 (2,92)	.094 (2,39)