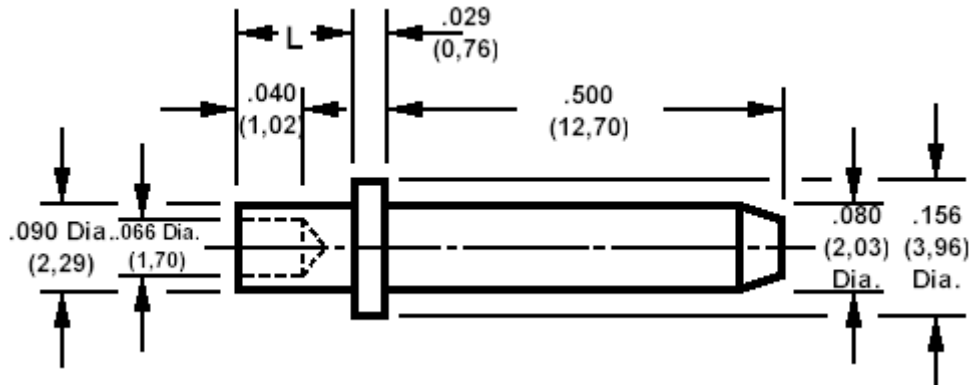


460-1524 Swage mount, .080 (2,03) diameter pin

Recommended mounting hole .094 (2,39) ± .002 (0,05).



How to order code

460-1524-XX-YY-00

Basic Part No XX= L dimension, YY = Plating Finish

MATERIALS

Component	Material	Finish (-03)	Finish (-04)
Pin	Brass	Gold over Nickel	Electro-tin over copper

DIMENSIONS

Basic Part Number	(XX)	L	Board Thickness
460-1524	-01	.051 (1,30)	.031 (0,79)
	-02	.081 (2,08)	.061 (1,57)
	-03	.113 (2,87)	.094 (2,39)

SWAGE TOOLING

Recommended Swaging Tools:-	
Anvil	435-6523-01-00-00
Punch	435-6663-01-00-00

Due to pin length, these pins cannot be swaged using bench press 435-3803-01-00-00