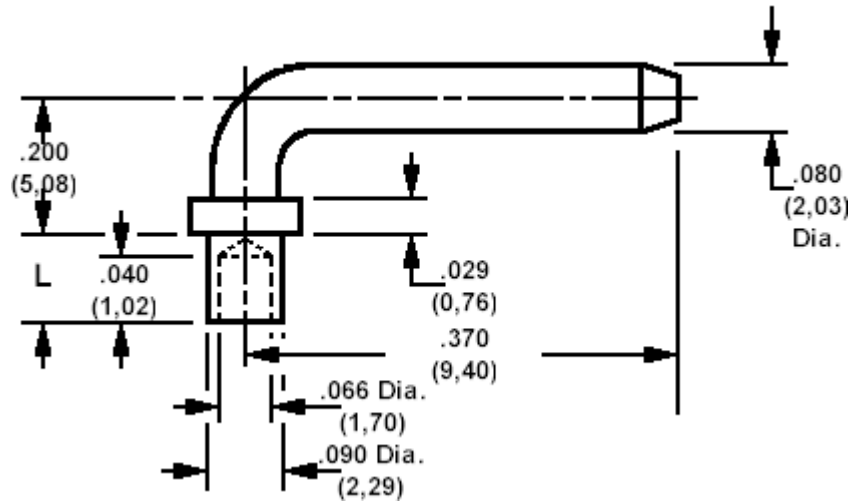


## 460-1523 Swage mount, right angle, .080 (2,03) diameter pin

Recommended mounting hole .094 (2,39) ± .002 (0,05)



### How to order code

**460-1523-XX-YY-00**

Basic Part No XX= L dimension, YY = Plating Finish

### MATERIALS

Component	Material	Finish (-03)	Finish (-04)
Pin	Brass	Gold over Nickel	Electro-tin over copper

### DIMENSIONS

Basic Part Number	(XX)	L	Board Thickness
460-1523	-01	.051 (1,30)	.031 (0,79)
	-02	.081 (2,08)	.061 (1,57)
	-03	.112 (2,87)	.094 (2,39)

### SWAGE TOOLING

Recommended Swaging Tools:-	
Anvil	435-6523-01-00-00
Punch	435-6663-01-00-00

Because of pin configuration, these tools cannot be used in manual swager 435-3803-01-00-00