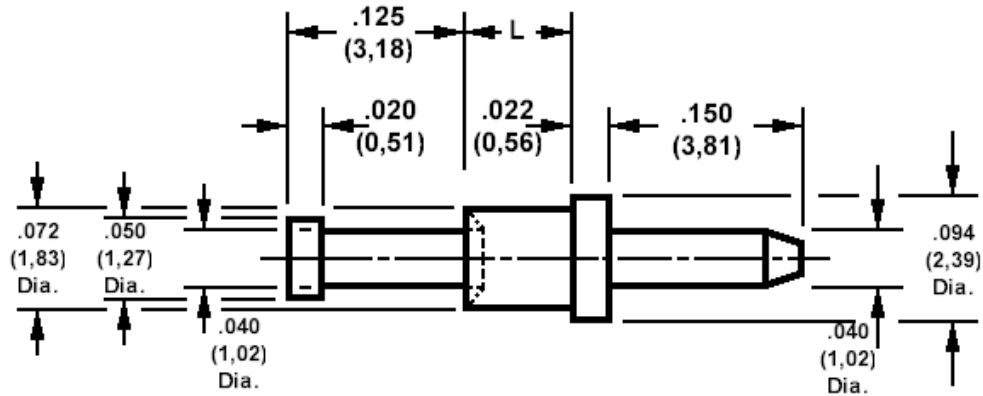


**460-5243 Swage mount, .040 (1,02) diameter pin**

Recommended mounting hole .076 (1,93) ± .002 (0,05)



**How to order code**

**460-5243-XX-YY--00**

Basic Part No XX= L dimension, YY = Plating Finish

DIMENSIONS (XX)			
Basic Part Number	(XX)	L	Board Thickness
460-5243	-01	.051 (1,30)	.031 (0,79)
	-02	.081 (2,08)	.061 (1,57)
	-03	.122 (2,87)	.094 (2,39)
	-04	.144 (3,68)	.125 (3,18)

MATERIALS			
Component	Material	Finish (-03)	Finish (-04)
Pin	Brass	Gold over Nickel	Electro-tin over copper

SWAGE TOOLING	
Recommended Swaging Tools:-	
Anvil	435-6461-01-00-00
Punch	435-6618-01-00-00