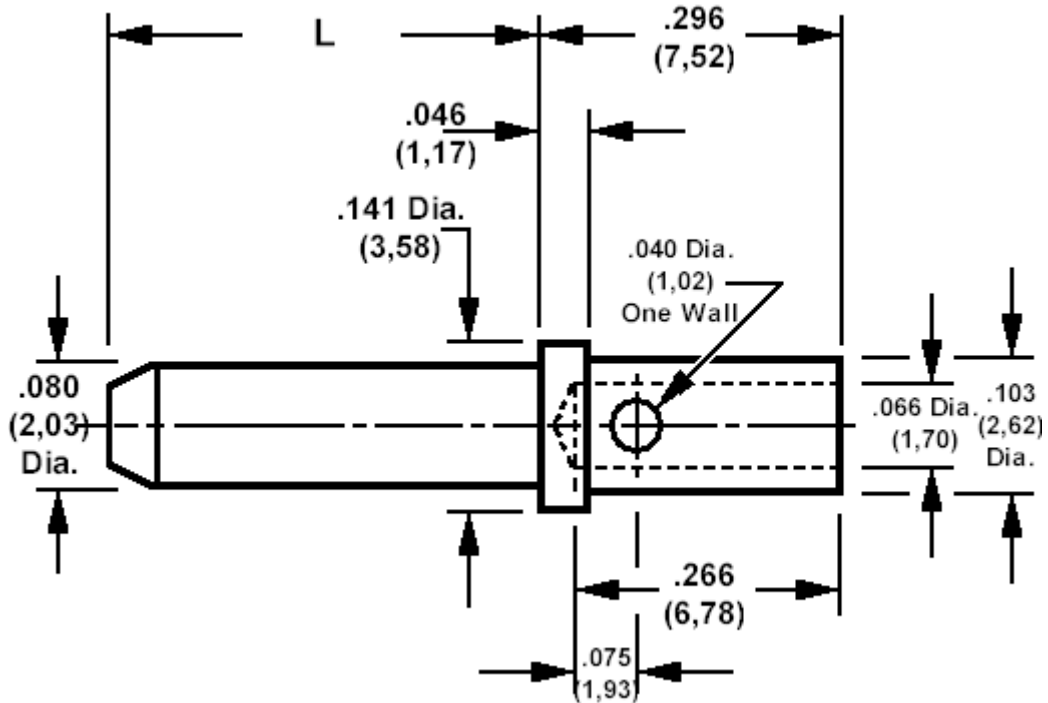


**460-3299 Crimp connector pin, .080 (2,03) diameter pin****How to order code****460-3299-XX-03-00**

Basic Part Number - XX='L' length

MATERIALS		
Component	Material	Finish (-03)
Pin	Brass	Gold over Nickel

DIMENSIONS		
Pin Basic Part No		L
460-3299	-01	.200 (5,08)
	-02	.375 (9,53)
	-03	.500 (12,70)

Recommended hook up wire size is 20 AWG (7 strands of 28 AWG) copper wire, insulated.  
Will also accept 18 AWG (7 strands of 26 AWG) copper wire, insulated, and 16 AWG (19 strands of 29 AWG) copper wire, insulated.

Recommended crimping pliers 435-5680-01-00-00.