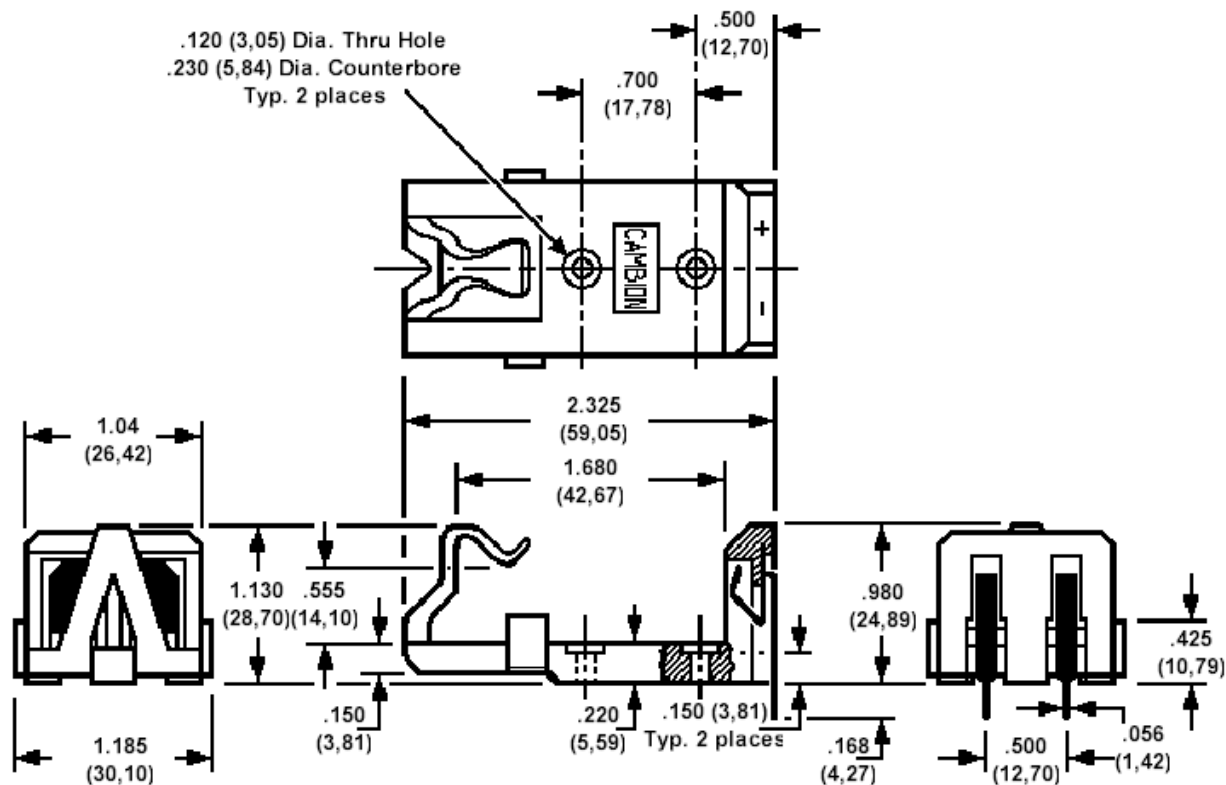


400-1803, "PP3" size Battery Holder - PC mount

**Rec. Mounting Holes - .062 (1,57) Dia., on pitch of 0.500 (12,70) centres, plus bolt down holes per drawing
Suited for use on boards up to .125 (3,18) thick**

How to order code**400-1803-01-00-20****Basic Part No****FEATURES**

Single Piece Construction

Requires No Snap on Battery Connection

Shockproof Battery Retention

BATTERY INSERTION/REMOVAL PROCEDURE

Insertion	Pull back moulded clip part of holder, and slide flat end of battery down into the holder. Drop contact end of battery into position, and release clip
Removal	Pull back moulded clip part of holder, and lift battery out of holder, contact end first.

Component	Material	Finish
Body	PBT	Colour - Natural
Spring and Solder Tail	Phosphor Bronze	Electro Tin

Mechanical tolerance unless otherwise stated $\pm .010(0,25)$