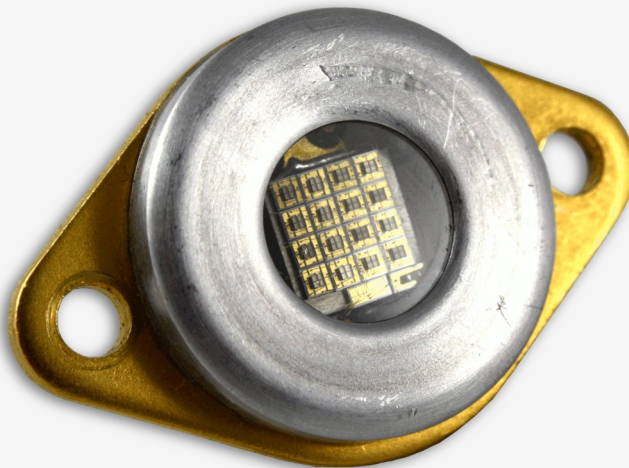




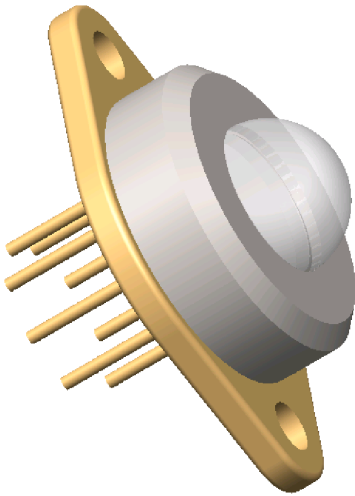
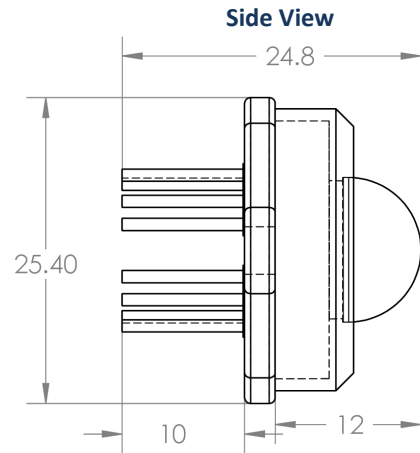
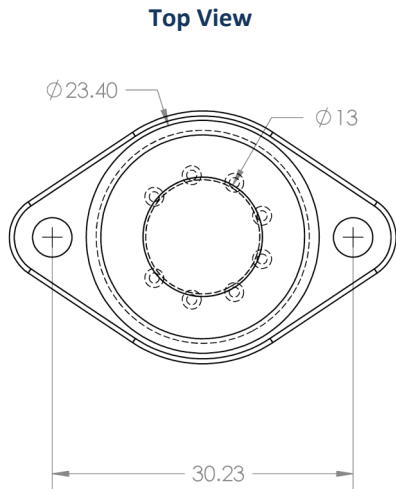
High Power UVCLEAN[®] Lamps (30-50mW)



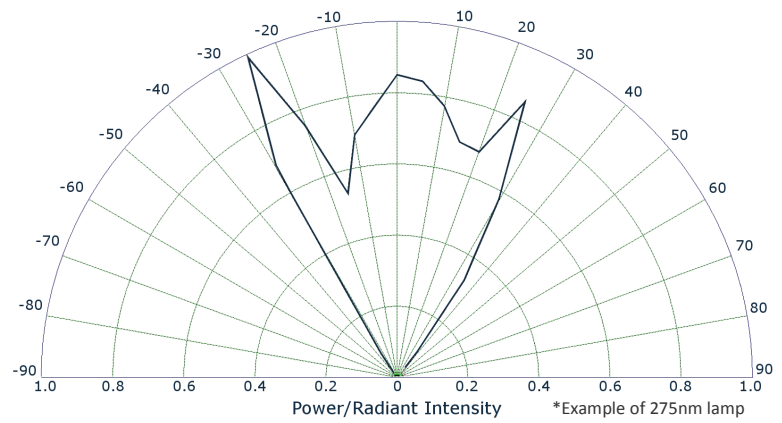
UVCLEAN[®] lamps are multi-chip arrays of UV LEDs enclosed in metal glass packages. Standard lamps are available in a selection of wavelengths from 255nm to 350nm and offer higher output powers than UVTOP[®] LEDs.

The 30-50mW UVCLEAN[®] lamp is packaged in a T0-3 can with options of flat window and hemispherical lenses for beam shaping. The standard lamp comes with an internal heat sink. An embedded thermoelectric cooler (TEC) can be added upon request.

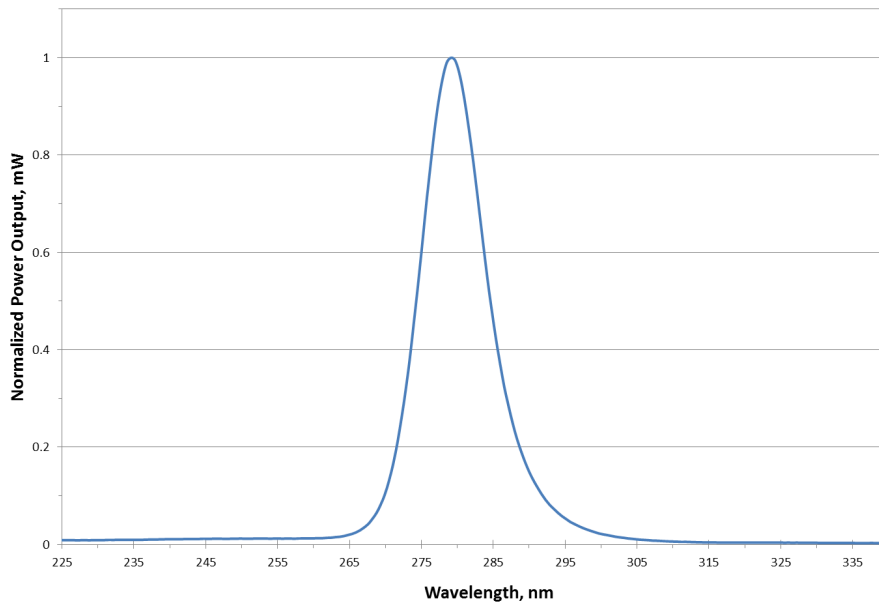
TO-3 with Hemispherical Lens



Hemispherical Lens Typical Angular Diagram

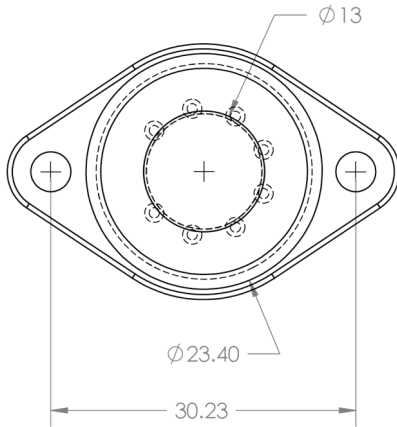


Spectral Data, 275nm, 30-50mW

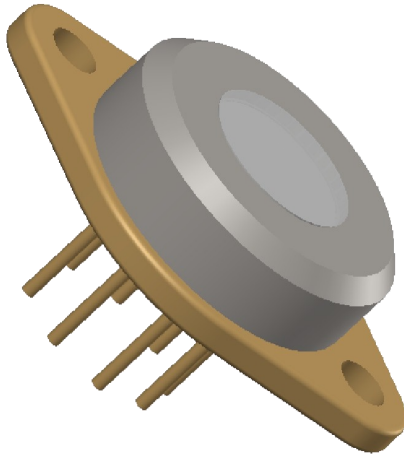
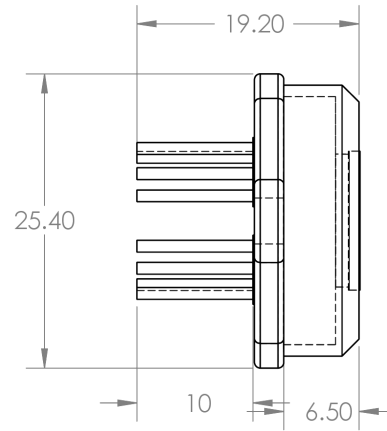


TO-3 with Flat Window

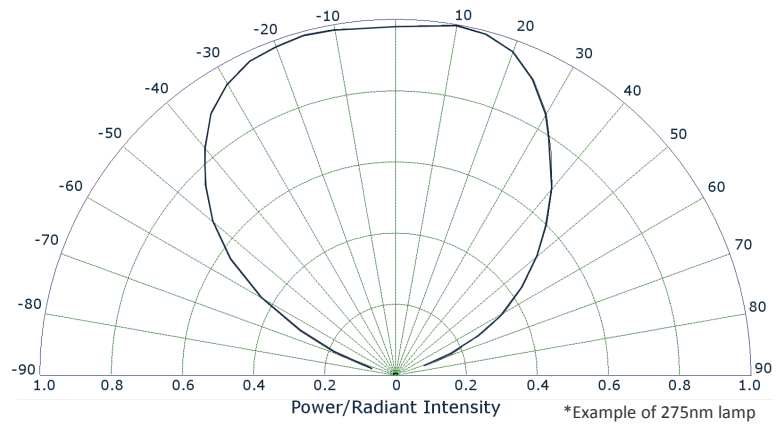
Top View



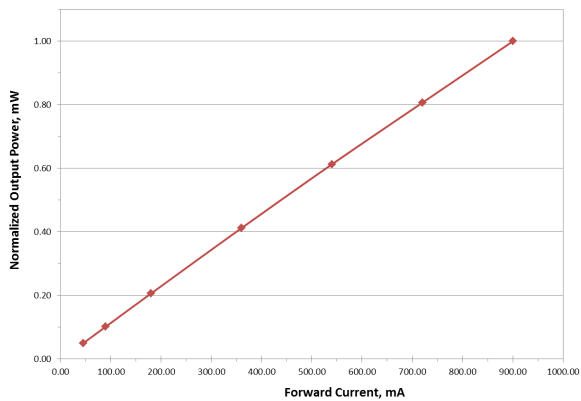
Side View



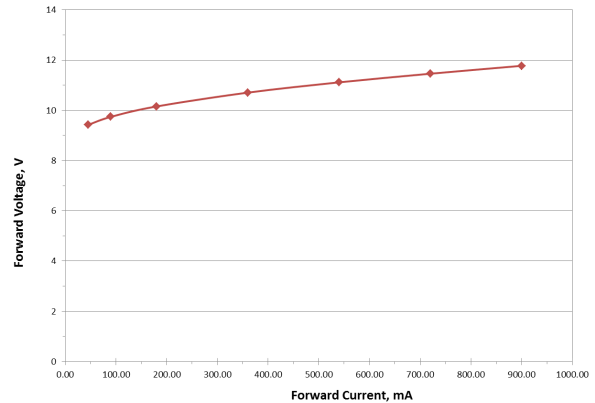
Flat Window Typical Angular Diagram



275nm L-I Curve, 30-50mW



275nm I-V Curve, 30-50mW



High Power UVCLEAN[®] Lamps (30-50mW)

Part Number	Typ Peak Wavelength (nm)	Tolerance	Typ. Optical Power P _{out} (μW)	Package	Window Type	Typical** (I _f)	Typ FWHM (±3nm)
						I _f	
UVCLEAN255FW-50	255	±5nm	30-50mW	TO-3	Flat Window	900mA	12
UVCLEAN255HS-50	255	±5nm	30-50mW	TO-3	Hemispherical	900mA	12
UVCLEAN265FW-50	265	±5nm	30-50mW	TO-3	Flat Window	900mA	12
UVCLEAN265HS-50	265	±5nm	30-50mW	TO-3	Hemispherical	900mA	12
UVCLEAN275FW-50	275	±5nm	30-50mW	TO-3	Flat Window	900mA	12
UVCLEAN275HS-50	275	±5nm	30-50mW	TO-3	Hemispherical	900mA	12
UVCLEAN280FW-50	280	±5nm	30-50mW	TO-3	Flat Window	900mA	12
UVCLEAN280HS-50	280	±5nm	30-50mW	TO-3	Hemispherical	900mA	12
UVCLEAN290FW-50	290	±5nm	30-50mW	TO-3	Flat Window	900mA	12
UVCLEAN290HS-50	290	±5nm	30-50mW	TO-3	Hemispherical	900mA	12
UVCLEAN300FW-50	300	±5nm	30-50mW	TO-3	Flat Window	900mA	12
UVCLEAN300HS-50	300	±5nm	30-50mW	TO-3	Hemispherical	900mA	12
UVCLEAN315FW-50	315	±5nm	30-50mW	TO-3	Flat Window	900mA	12
UVCLEAN315HS-50	315	±5nm	30-50mW	TO-3	Hemispherical	900mA	12
UVCLEAN330FW-50	330	±10nm	30-50mW	TO-3	Flat Window	900mA	12
UVCLEAN330HS-50	330	±10nm	30-50mW	TO-3	Hemispherical	900mA	12
UVCLEAN350FW-50	350	±10nm	30-50mW	TO-3	Flat Window	900mA	12
UVCLEAN350HS-50	350	±10nm	30-50mW	TO-3	Hemispherical	900mA	12

*Typical values ONLY not guaranteed specifications

**Max dissipated power not to exceed 200mW without thermal management

Standard circuit configuration shown: custom configurations available upon request.

