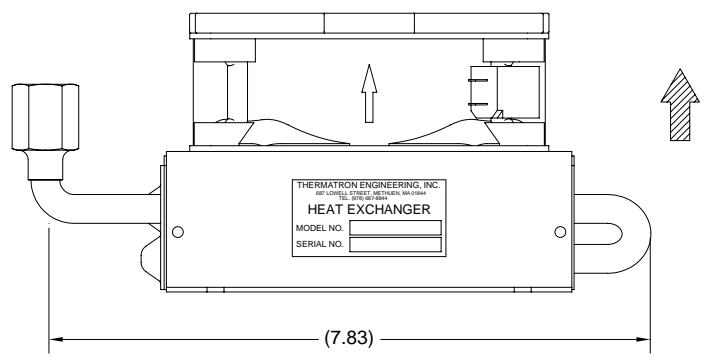
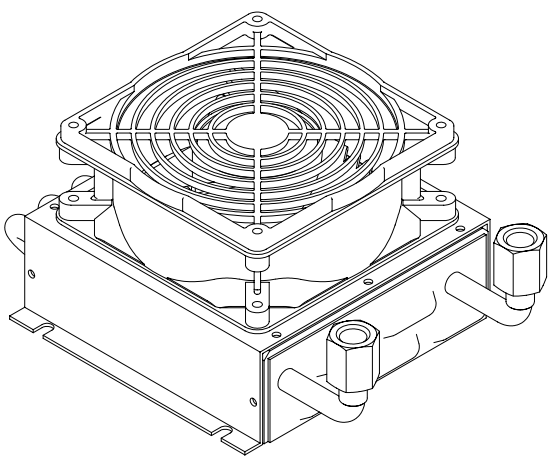
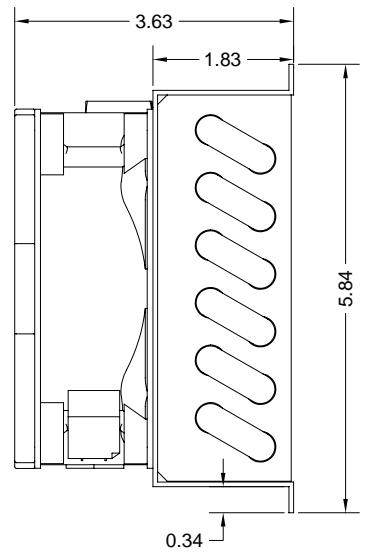
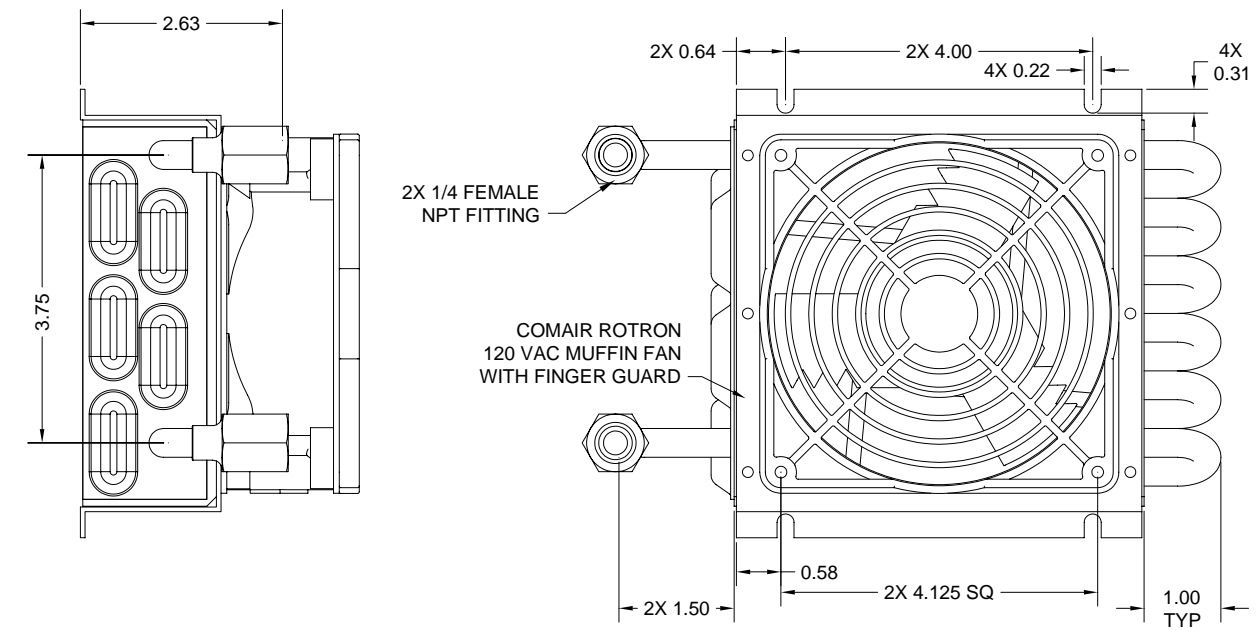


REVISIONS				
ZONE	REV	DESCRIPTION	DATE	APPROVED
	A	UPDATED-NO CHANGE	05/15/2000	B. RABBITT

D
C
B
A

D
C
B
A



- NOTES:
1. FRAME FINISH GOLD IRRIDITE PER. MIL-C-5441
 2. WELD PER A8381
 3. PRESSURE TEST 150 PSI N2 UNDER WATER
 4. BRIGHTEN FINS PRIOR TO FRAME ASS'Y PER. TEP 101-06
 5. INTERNAL FLUSH AND TUBE TREAT PER. TEP 101-07
 6. APPLY LABEL AS SHOWN , MARK DATE CODE

CONFIDENTIAL INFORMATION	DRAWN BY: J. RUBITSKI	DATE: 05/15/2000	THERMATRON ENGINEERING Inc. 867 LOWELL STREET, METHUEN MA 01844 * PHONE: (978)-687-8844 FAX: (978)-687-8844 E-MAIL: RFP@THERMATRONENGL.COM * Web Site: HTTP://WWW.THERMATRONENGL.COM
	CHECKED BY: B. RABBITT	DATE: 05/15/2000	
	APPROVED BY: B. RABBITT	DATE: 05/15/2000	
	MATERIAL: CU FIN. 316L TUBE	FINISH:	
THIS DRAWING CONTAINS INFORMATION THAT IS RESTRICTED. USE OF THE INFORMATION CONTAINED HEREIN WITHOUT THE EXPRESS CONSENT OF THERMATRON ENGINEERING IS STRICTLY PROHIBITED.	SEE NOTES	UNLESS OTHERWISE SPECIFIED, DIMENSIONS ARE IN INCHES.	TITLE: HEAT EXCHANGER
REFERENCE No. _____	TOLERANCE	DECIMALS: .XX ± 0.015	CODE INDENT. No. 1GQ06
NEXT ASSEMBLY: _____	ANGLES: .XXX ± 0.010 ± 1/2		DRAWING No. 730TPM1
			DRAWING SIZE: C
			SCALE: 1:1
			SHEET: 1 OF 1

4 3 2 1