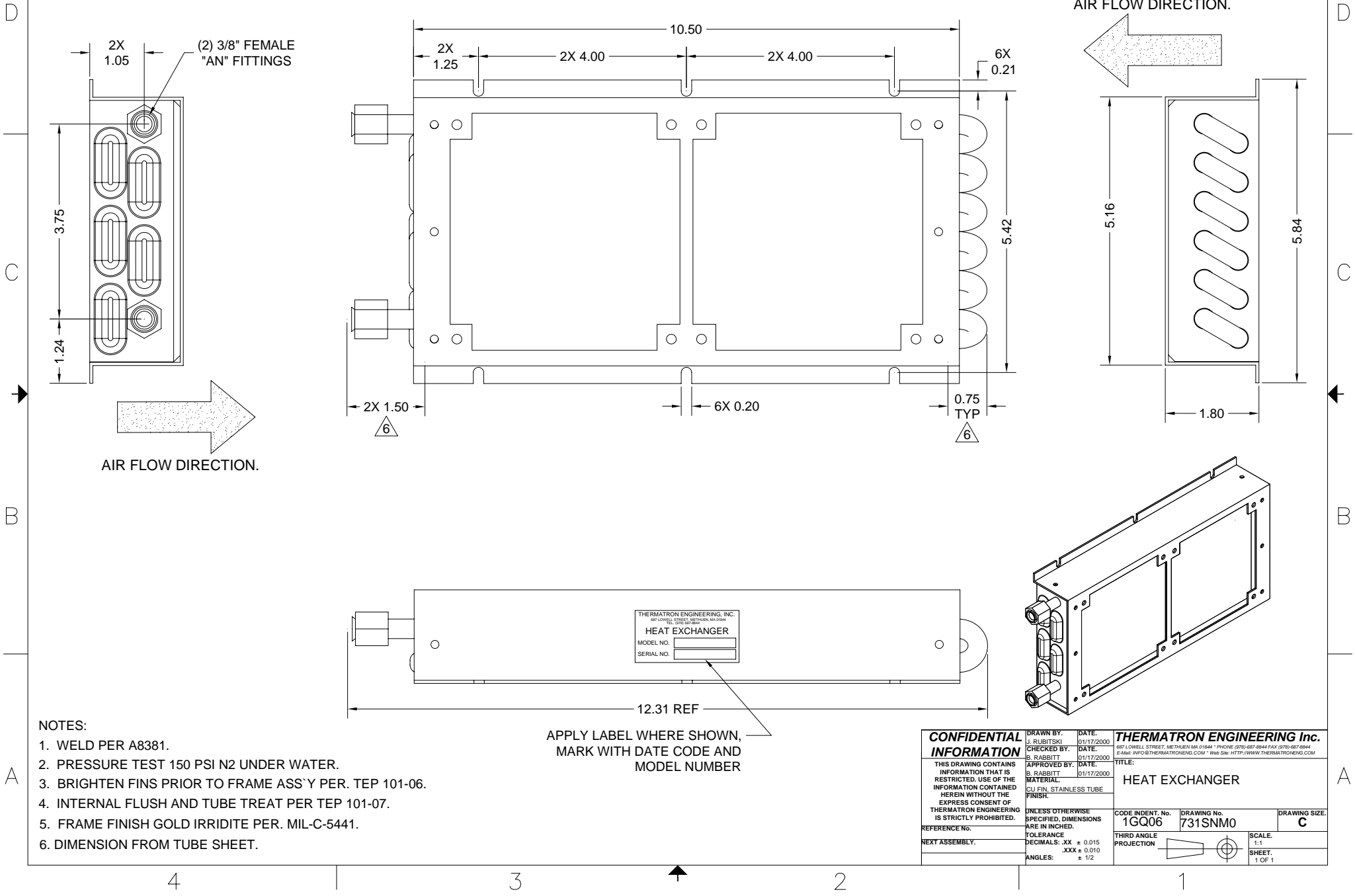


REVISIONS				
ZONE	REV	DESCRIPTION	DATE	APPROVED
A	RELEASED		01/17/2000	B. RABBITT



- NOTES:
1. WELD PER A8381.
  2. PRESSURE TEST 150 PSI N2 UNDER WATER.
  3. BRIGHTEN FINNS PRIOR TO FRAME ASS'Y PER. TEP 101-06.
  4. INTERNAL FLUSH AND TUBE TREAT PER TEP 101-07.
  5. FRAME FINISH GOLD IRRIDITE PER. MIL-C-5441.
  6. DIMENSION FROM TUBE SHEET.

APPLY LABEL WHERE SHOWN, MARK WITH DATE CODE AND MODEL NUMBER

<b>CONFIDENTIAL INFORMATION</b> THIS DRAWING CONTAINS INFORMATION THAT IS RESTRICTED. USE OF THE INFORMATION CONTAINED HEREIN WITHOUT THE EXPRESS CONSENT OF THERMATRON ENGINEERING IS STRICTLY PROHIBITED.	DRAWN BY: J. RUBITSKI	DATE: 01/17/2000	<b>THERMATRON ENGINEERING Inc.</b> 687 LOWELL STREET, METUEN MA 01844 * PHONE: (978) 687-8844 FAX: (978) 687-8844 E-MAIL: INFO@THERMATRONENG.COM * WWW SITE: HTTP://WWW.THERMATRONENG.COM
	CHECKED BY: B. RABBITT	DATE: 01/17/2000	
	APPROVED BY: B. RABBITT	DATE: 01/17/2000	
	MATERIAL: CU FIN, STAINLESS TUBE FINISH:		
REFERENCE NO.	UNLESS OTHERWISE SPECIFIED, DIMENSIONS ARE IN INCHES.	CODE IDENT. No. 1GQ06	DRAWING No. 731SNM0
NEXT ASSEMBLY.	TOLERANCE DECIMALS: .XX ± 0.015 .XXX ± 0.010 ANGLES: ± 1/2	THIRD ANGLE PROJECTION	DRAWING SIZE: C
		SCALE: 1:1	SHEET: 1 OF 1