



# RADIAL LEADED POWER LINE CHOKES

## AIRD 07 SERIES

### FEATURES:

- High Saturation Material
- Polyolefin Shrink Tubing
- Low DC Resistance
- High Reliability Low cost

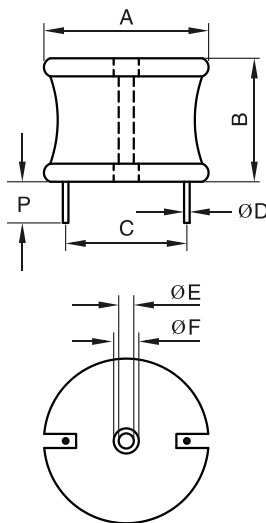
### OPTIONS:

- Packaging: Tape & Reel is Standard (Qty: 1000 pcs)  
Bulk packaging available for smaller quantities
- Tolerance: 10% is standard, tighter tolerances available.

### COMMON APPLICATIONS:

- Switching Regulators
- RFI Suppression Filters
- Power Amplifiers
- Power Supplies
- SCR and Triac Controls
- Speaker Crossover Networks
- Automotive Systems
- Filters

### PHYSICAL CHARACTERISTICS



DIMENSIONS: inches/mm

A	B	P(min)	ØE	ØF
2.40/60.96	1.50/38.10	0.50/12.70	0.10/2.54	0.25/6.35

### ELECTRONICAL SCHEMATIC



### TECHNICAL INFORMATION:

The AIRD-05,06,07,08 Series of Power Line Choke is available in 367 standard values covering a wide range of inductance and current. The use of high saturation flux density material make these coils ideal for use in switching regulated power supply applications and wherever high current choke values in a small physical size are needed.

- Inductance Testing: .HP4284A,HP4285A or equivalent
- RDC: QuadTech 1880 Milliohmeter
- Rated Current L value drop 10% typ. at I<sub>DC</sub> against its initial value
- Temperature rise 40°C Max Reference ambient temperature
- Solderability: 75% of the lead wire shall be covered
- Soldering Methods: Wave, Reflow
- Operating Temperature: -25°C to +85°C
- Storage Temperature: -55°C to +125°C
- Terminal bending strength: 24.5N Min
- Moisture resistance: ΔL/L ≤ ± 10%

Note: All specifications subject to change without notice.

### STANDARD SPECIFICATIONS

Part Number	L (μH) @1KHz	DCR (Ω Max)	IDC (A Max)	Dim C (Inches/mm) Approx.	Dim ØD (Inches/mm) Nom.
AIRD07-5R6M	5.6	0.0018	45.0	1.60/40.64	0.120/3.048
AIRD07-6R8M	6.8	0.0021	45.0	1.60/40.64	0.120/3.048
AIRD07-8R2M	8.2	0.0022	45.0	1.60/40.64	0.120/3.048
AIRD07-100k	10.0	0.0024	45.0	1.60/40.64	0.120/3.048
AIRD07-120K	12.0	0.0025	45.0	1.60/40.64	0.120/3.048
AIRD07-150K	15.0	0.0028	42.0	1.70/43.18	0.120/3.048
AIRD07-180K	18.0	0.0032	40.0	1.70/43.18	0.120/3.048
AIRD07-220K	22.0	0.0036	38.0	1.70/43.18	0.120/3.048
AIRD07-270K	27.0	0.0042	38.0	1.70/43.18	0.120/3.048
AIRD07-330K	33.0	0.0045	37.0	1.70/43.18	0.120/3.048
AIRD07-390K	39.0	0.0048	36.0	1.80/45.72	0.120/3.048
AIRD07-470K	47.0	0.0057	35.0	1.80/45.72	0.120/3.048
AIRD07-560K	56.0	0.0069	35.0	1.80/45.72	0.120/3.048
AIRD07-680K	68.0	0.0078	35.0	1.80/45.72	0.120/3.048
AIRD07-820K	82.0	0.0093	35.0	1.80/45.72	0.120/3.048
AIRD07-101K	100.0	0.0103	27.0	1.80/45.72	0.120/3.048
AIRD07-121K	120.0	0.0108	27.0	1.80/45.72	0.120/3.048
AIRD07-151K	150.0	0.0120	25.0	1.80/45.72	0.120/3.048
AIRD07-181K	180.0	0.0156	22.0	1.80/45.72	0.120/3.048
AIRD07-221K	220.0	0.0168	22.0	1.80/45.72	0.105/2.667
AIRD07-271K	270.0	0.0228	21.0	1.80/45.72	0.105/2.667
AIRD07-331K	330.0	0.0300	17.0	1.80/45.72	0.094/2.3876
AIRD07-390K	390.0	0.0432	13.5	1.70/43.18	0.084/2.1336
AIRD07-471K	470.0	0.0456	13.5	1.70/43.18	0.075/1.9050
AIRD07-561K	560.0	0.0480	13.5	1.75/44.45	0.075/1.9050
AIRD07-681K	680.0	0.0516	12.0	1.80/45.72	0.075/1.9050
AIRD07-820K	820.0	0.0648	11.5	1.80/45.72	0.075/1.9050
AIRD07-102K	1000.0	0.0936	10.0	1.75/44.45	0.068/1.7272
AIRD07-122K	1200.0	0.1020	9.50	1.78/45.212	0.068/1.7272
AIRD07-152K	1500.0	0.1176	8.00	1.80/45.72	0.068/1.7272
AIRD07-182K	1800.0	0.1536	7.50	1.70/43.18	0.060/1.5240
AIRD07-222K	2200.0	0.2160	7.20	1.70/43.18	0.054/1.3716
AIRD07-272K	2700.0	0.2424	6.00	1.75/44.45	0.054/1.3716
AIRD07-332K	3300.0	0.2640	5.50	1.80/45.72	0.054/1.3716
AIRD07-392K	3900.0	0.3480	5.20	1.75/44.75	0.048/1.2192
AIRD07-472K	4700.0	0.3924	5.00	1.78/45.212	0.048/1.2192
AIRD07-562K	5600.0	0.4320	4.70	1.80/45.72	0.048/1.2192
AIRD07-682K	6800.0	0.5940	4.50	1.70/43.18	0.043/1.0922
AIRD07-822K	8200.0	0.6600	4.00	1.75/44.45	0.043/1.0922
AIRD07-103K	10000.0	0.7560	4.00	1.80/45.72	0.043/1.0922
AIRD07-123K	12000.0	0.9840	3.50	1.80/45.72	0.039/0.9986
AIRD07-153K	15000.0	1.4160	2.80	1.75/44.45	0.035/0.8890
AIRD07-183K	18000.0	1.5240	2.80	1.78/45.212	0.035/0.8890
AIRD07-223K	22000.0	1.8000	2.30	1.80/45.72	0.035/0.8890
AIRD07-273K	27000.0	2.3760	2.00	1.75/44.45	0.031/0.7874
AIRD07-333K	33000.0	2.6400	1.90	1.80/45.72	0.031/0.7874
AIRD07-393K	39000.0	3.5760	1.60	1.75/44.45	0.028/0.7112
AIRD07-473K	47000.0	3.9360	1.60	1.78/45.212	0.028/0.7112
AIRD07-563K	56000.0	4.3200	1.50	1.80/45.72	0.028/0.7112
AIRD07-683K	68000.0	5.2200	1.30	1.85/46.99	0.028/0.7112