



color: black
pitch: 10 mm
certification: CE, UL

1. Material:

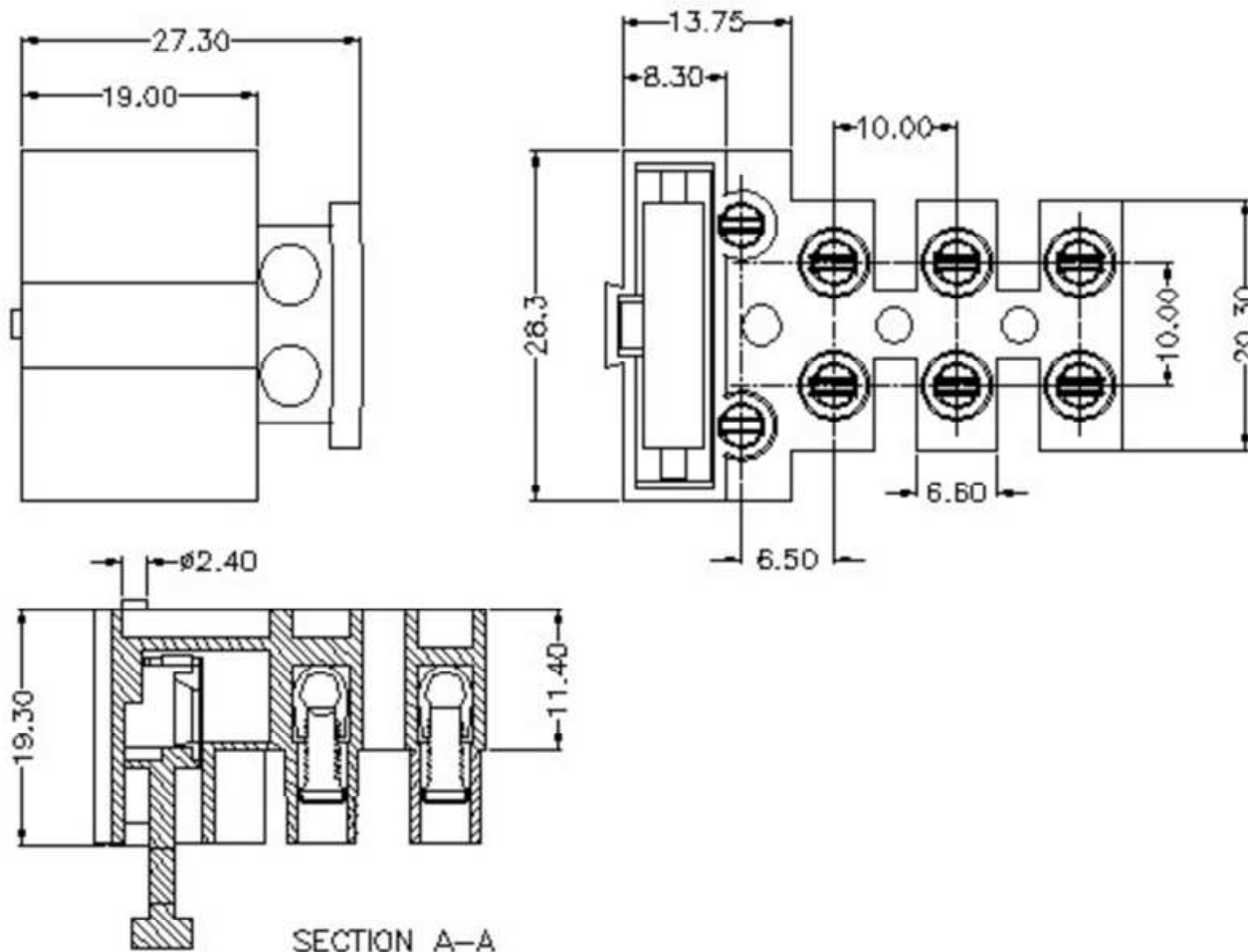
- Contact : Brass, Tin plated
- Housing : PBT, UL94V-0
- Screw: M3 steel Zinc Plated

2. Electrical:

- Rated voltage : 300V
- Rated current : 6.3A
- Insulation resistance: 500MΩ/DC500V

3. Mechanical:

- Temp. range: -40°C...+105°C
- Wire range: 22 – 14 AWG
- MAX Soldering: +250°C for 5 Sec.
- Torque value: 0.5N.m 4.5LB.in



HOW TO ORDER

