



■ Features :

- Universal AC input/Full range
- Protections: Short circuit / Overload / Over voltage
- Cooling by free air convection
- 100% full load burn-in test
- 2 years warranty

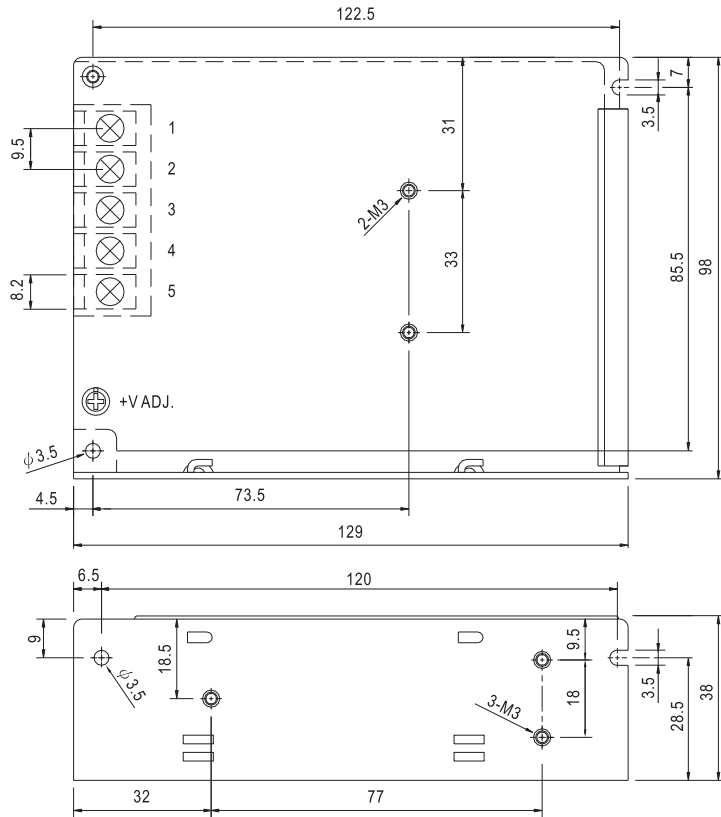


SPECIFICATION

| MODEL                 | NES-50-5  | NES-50-12   | NES-50-15    | NES-50-24     | NES-50-48    |              |
|-----------------------|---|---|--------------|---------------|--------------|--------------|
| OUTPUT                | DC VOLTAGE  | 5V  | 12V          | 15V           | 24V          | 48V          |
|                       | RATED CURRENT   | 10A   | 4.2A         | 3.4A          | 2.2A         | 1.1A         |
|                       | CURRENT RANGE   | 0 ~ 10A   | 0 ~ 4.2A     | 0 ~ 3.4A      | 0 ~ 2.2A     | 0 ~ 1.1A     |
|                       | RATED POWER   | 50W   | 50.4W        | 51W           | 52.8W        | 52.8W        |
|                       | RIPPLE & NOISE (max.) Note.2  | 80mVp-p   | 120mVp-p     | 150mVp-p      | 200mVp-p     | 240mVp-p     |
|                       | VOLTAGE ADJ. RANGE  | 4.75 ~ 5.5V   | 10.8 ~ 13.2V | 13.5 ~ 16.5V  | 21.6 ~ 26.4V | 43.2 ~ 52.8V |
|                       | VOLTAGE TOLERANCE Note.3  | ±2.0%   | ±1.0%        | ±1.0%         | ±1.0%        | ±1.0%        |
|                       | LINE REGULATION Note.4  | ±0.5%   | ±0.5%        | ±0.5%         | ±0.5%        | ±0.5%        |
|                       | LOAD REGULATION Note.5  | ±0.5%   | ±0.5%        | ±0.5%         | ±0.5%        | ±0.5%        |
|                       | SETUP, RISE TIME  | 500ms, 30ms/230VAC      1200ms, 30ms/115VAC at full load  |              |               |              |              |
| HOLD UP TIME (Typ.)   | 50ms/230VAC      10ms/115VAC at full load   |   |              |               |              |              |
| INPUT                 | VOLTAGE RANGE   | 85 ~ 264VAC      120 ~ 370VDC   |              |               |              |              |
|                       | FREQUENCY RANGE   | 47 ~ 63Hz   |              |               |              |              |
|                       | EFFICIENCY(Typ.)  | 79%   | 82%          | 83%           | 86%          | 87%          |
|                       | AC CURRENT (Typ.)   | 1.1A/115VAC      0.65A/230VAC   |              |               |              |              |
|                       | INRUSH CURRENT (Typ.)   | COLD START 45A  |              |               |              |              |
|                       | LEAKAGE CURRENT   | <2mA / 240VAC   |              |               |              |              |
| PROTECTION            | OVERLOAD  | 110 ~ 150% rated output power<br>Protection type : Hiccup mode, recovers automatically after fault condition is removed |              |               |              |              |
|                       | OVER VOLTAGE  | 5.75 ~ 6.75V  | 13.8 ~ 16.2V | 17.25 ~ 20.25 | 27.6 ~ 32.4V | 55.2 ~ 64.8V |
|                       |   | Protection type : Shut down o/p voltage, re-power on to recover   |              |               |              |              |
| ENVIRONMENT           | WORKING TEMP.   | -20 ~ +60°C (Refer to "Derating Curve")   |              |               |              |              |
|                       | WORKING HUMIDITY  | 20 ~ 90% RH non-condensing  |              |               |              |              |
|                       | STORAGE TEMP., HUMIDITY   | -40 ~ +85°C, 10 ~ 95% RH  |              |               |              |              |
|                       | TEMP. COEFFICIENT   | ±0.03%/°C (0 ~ 45°C)  |              |               |              |              |
|                       | VIBRATION   | 10 ~ 500Hz, 2G 10min./1cycle, period for 60min. each along X, Y, Z axes   |              |               |              |              |
| SAFETY & EMC (Note 7) | SAFETY STANDARDS Note.6   | UL60950-1, CB(IEC60950-1),CCC GB4943.1:2011 approved  |              |               |              |              |
|                       | WITHSTAND VOLTAGE   | I/P-O/P:3KVAC    I/P-FG:2KVAC    O/P-FG:0.5KVAC   |              |               |              |              |
|                       | ISOLATION RESISTANCE  | I/P-O/P, I/P-FG, O/P-FG:100M Ohms / 500VDC / 25°C/ 70% RH   |              |               |              |              |
|                       | EMC EMISSION  | Compliance to EN55022 (CISPR22) Class B, EN61000-3-2,-3   |              |               |              |              |
|                       | EMC IMMUNITY  | Compliance to EN61000-4-2,3,4,5,6,8,11, EN55024, EN61000-6-1, light industry level, criteria A                          |              |               |              |              |
| OTHERS                | MTBF  | 374.2K hrs min.    MIL-HDBK-217F (25°C)   |              |               |              |              |
|                       | DIMENSION   | 129*98*38mm (L*W*H)   |              |               |              |              |
|                       | PACKING   | 0.41Kg; 30pcs/13.3Kg/0.72CUFT   |              |               |              |              |
| NOTE                  | <p>1. All parameters NOT specially mentioned are measured at 230VAC input, rated load and 25°C of ambient temperature.</p> <p>2. Ripple &amp; noise are measured at 20MHz of bandwidth by using a 12" twisted pair-wire terminated with a 0.1uf &amp; 47uf parallel capacitor.</p> <p>3. Tolerance : includes set up tolerance, line regulation and load regulation.</p> <p>4. Line regulation is measured from low line to high line at rated load.</p> <p>5. Load regulation is measured from 0% to 100% rated load.</p> <p>6. For the request of GB4943.1,the power supply is only suitable for use in the altitude 2000m below and the non tropical climate condition.</p> <p>7. The power supply is considered a component which will be installed into a final equipment. The final equipment must be re-confirmed that it still meets EMC directives. For guidance on how to perform these EMC tests, please refer to "EMI testing of component power supplies." (as available on <a href="http://www.meanwell.com">http://www.meanwell.com</a>)</p> |   |              |               |              |              |

**Mechanical Specification**

Case No. 903 Unit:mm

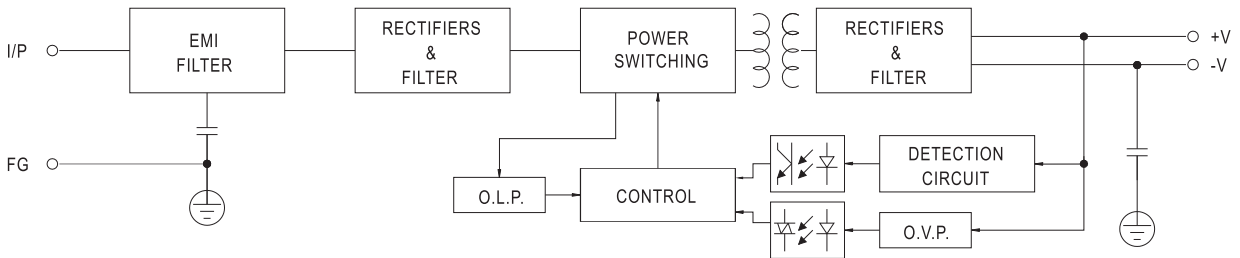


Terminal Pin No. Assignment

| Pin No. | Assignment | Pin No. | Assignment   |
|---------|------------|---------|--------------|
| 1       | AC/L       | 4       | DC OUTPUT -V |
| 2       | AC/N       | 5       | DC OUTPUT +V |
| 3       | FG         |         |              |

**Block Diagram**

fosc : 60KHz



**Derating Curve**

**Output Derating VS Input Voltage**

