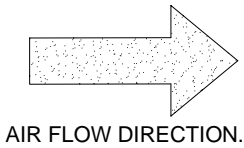
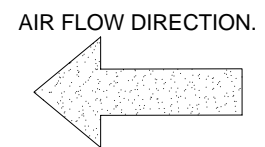
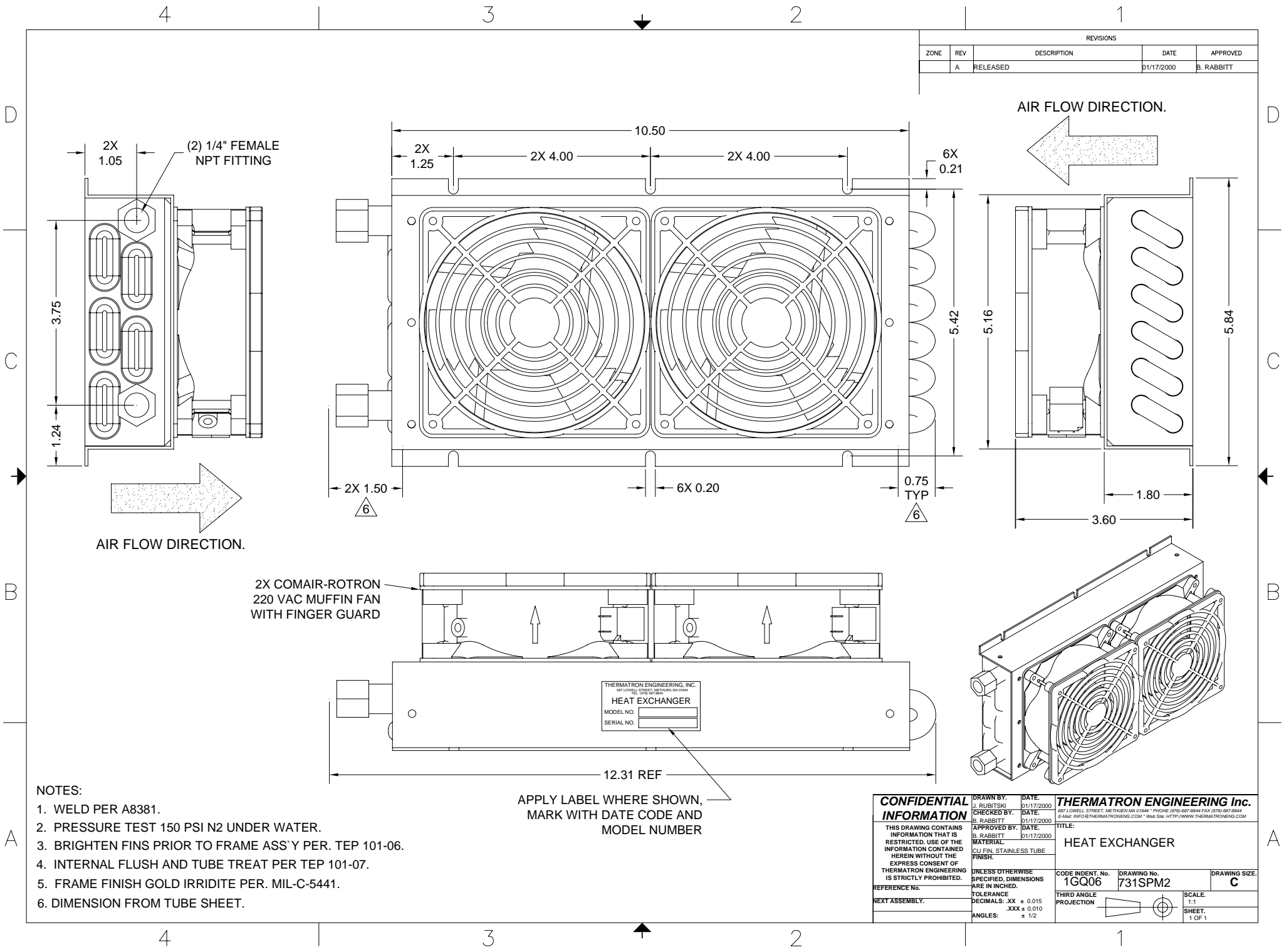


REVISIONS				
ZONE	REV	DESCRIPTION	DATE	APPROVED
A	RELEASED		01/17/2000	B. RABBITT



- NOTES:
1. WELD PER A8381.
 2. PRESSURE TEST 150 PSI N2 UNDER WATER.
 3. BRIGHTEN FINS PRIOR TO FRAME ASS'Y PER. TEP 101-06.
 4. INTERNAL FLUSH AND TUBE TREAT PER TEP 101-07.
 5. FRAME FINISH GOLD IRRIDITE PER. MIL-C-5441.
 6. DIMENSION FROM TUBE SHEET.

APPLY LABEL WHERE SHOWN,
MARK WITH DATE CODE AND
MODEL NUMBER

THERMATRON ENGINEERING, INC.
687 LOWELL STREET, METUEN, MA 01844
TEL: (978) 367-8844

HEAT EXCHANGER

MODEL NO. _____
SERIAL NO. _____

CONFIDENTIAL INFORMATION THIS DRAWING CONTAINS INFORMATION THAT IS RESTRICTED. USE OF THE INFORMATION CONTAINED HEREIN WITHOUT THE EXPRESS CONSENT OF THERMATRON ENGINEERING IS STRICTLY PROHIBITED.	DRAWN BY: U. RUBITSKI	DATE: 01/17/2000	THERMATRON ENGINEERING Inc. 687 LOWELL STREET, METUEN, MA 01844 * PHONE: (978) 367-8844 FAX: (978) 367-8844 E-MAIL: INFO@THERMATRONENGI.COM * WWW SITE: HTTP://WWW.THERMATRONENGI.COM	
	CHECKED BY: B. RABBITT	DATE: 01/17/2000		
	APPROVED BY: B. RABBITT	DATE: 01/17/2000		
	MATERIAL: CU FIN, STAINLESS TUBE	FINISH:		
REFERENCE NO.	UNLESS OTHERWISE SPECIFIED, DIMENSIONS ARE IN INCHES.	CODE IDENT. No. 1GQ06	DRAWING No. 731SPM2	DRAWING SIZE. C
NEXT ASSEMBLY.	TOLERANCE DECIMALS: .XX ± 0.015 .XXX ± 0.010 ANGLES: ± 1/2	THIRD ANGLE PROJECTION	SCALE: 1:1	SHEET: 1 OF 1