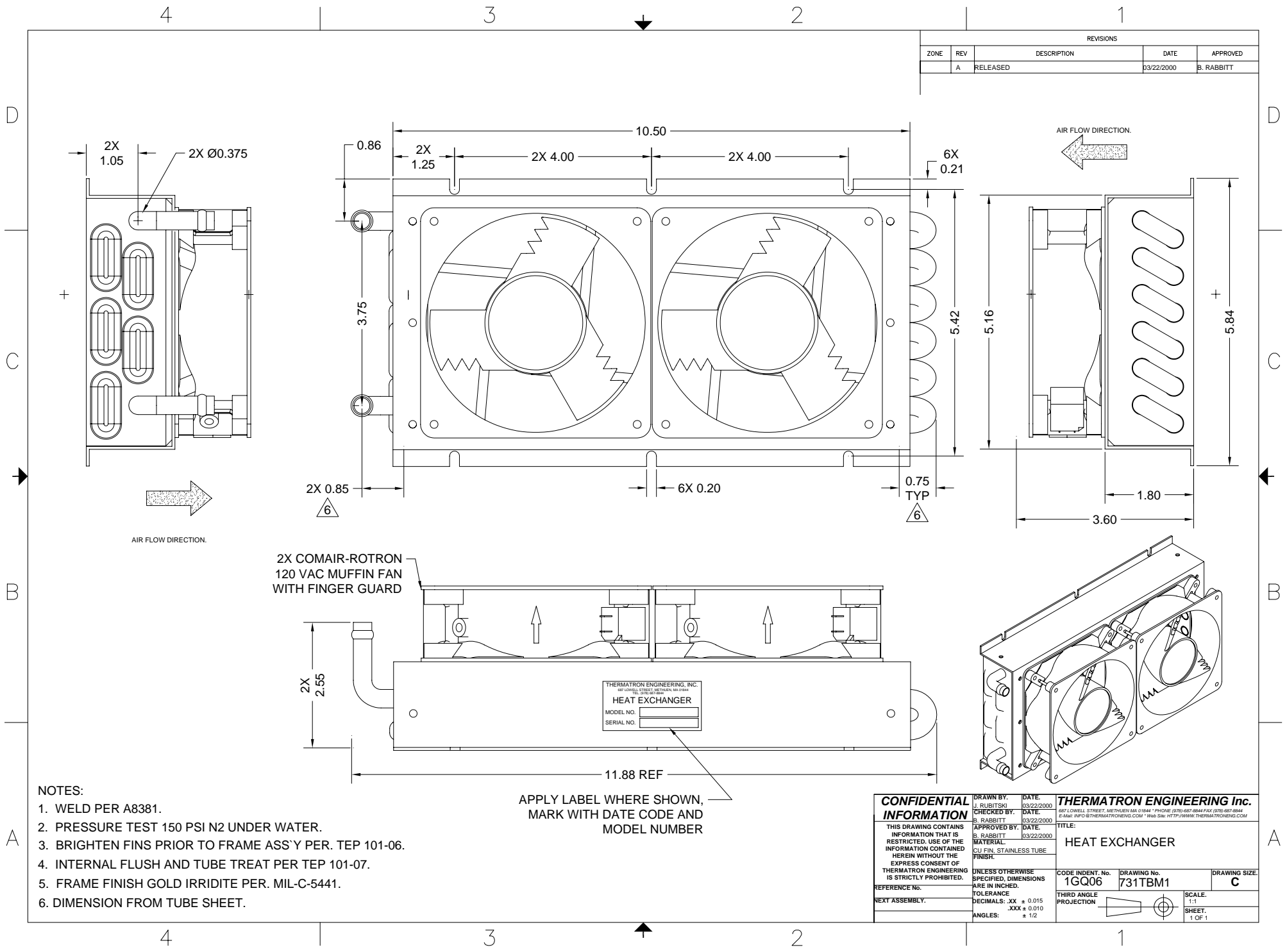


REVISIONS				
ZONE	REV	DESCRIPTION	DATE	APPROVED
	A	RELEASED	03/22/2000	B. RABBITT



- NOTES:
1. WELD PER A8381.
  2. PRESSURE TEST 150 PSI N2 UNDER WATER.
  3. BRIGHTEN FINS PRIOR TO FRAME ASS'Y PER. TEP 101-06.
  4. INTERNAL FLUSH AND TUBE TREAT PER TEP 101-07.
  5. FRAME FINISH GOLD IRRIDITE PER. MIL-C-5441.
  6. DIMENSION FROM TUBE SHEET.

APPLY LABEL WHERE SHOWN,  
MARK WITH DATE CODE AND  
MODEL NUMBER

<b>CONFIDENTIAL INFORMATION</b>	DRAWN BY: J. RUBITSKI	DATE: 03/22/2000	<b>THERMATRON ENGINEERING Inc.</b> 657 LOWELL STREET, METHUEN MA 01844 * PHONE: (978)-687-8844 FAX: (978)-687-8844 E-MAIL: RFO@THERMATRONENGL.COM * Web Site: HTTP://WWW.THERMATRONENGL.COM
	CHECKED BY: B. RABBITT	DATE: 03/22/2000	
	APPROVED BY: B. RABBITT	DATE: 03/22/2000	
THIS DRAWING CONTAINS INFORMATION THAT IS RESTRICTED. USE OF THE INFORMATION CONTAINED HEREIN WITHOUT THE EXPRESS CONSENT OF THERMATRON ENGINEERING IS STRICTLY PROHIBITED.	MATERIAL: CU FIN, STAINLESS TUBE FINISH.	TITLE: HEAT EXCHANGER	
REFERENCE No.:	UNLESS OTHERWISE SPECIFIED, DIMENSIONS ARE IN INCHES.	CODE INDENT. No. 1GQ06	DRAWING No. 731TBM1
NEXT ASSEMBLY:	TOLERANCE DECIMALS: .XX ± 0.015 .XXX ± 0.010 ANGLES: ± 1/2	THIRD ANGLE PROJECTION	DRAWING SIZE: C
			SCALE: 1:1 SHEET: 1 OF 1