

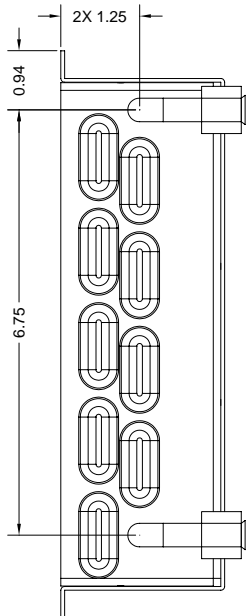
4

3

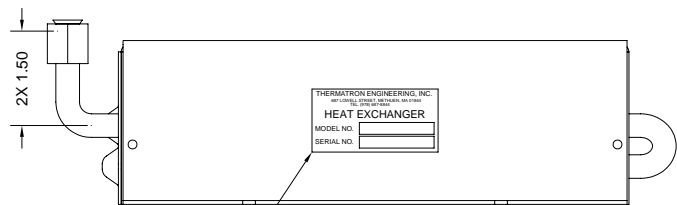
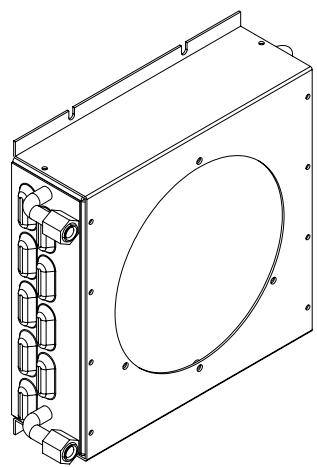
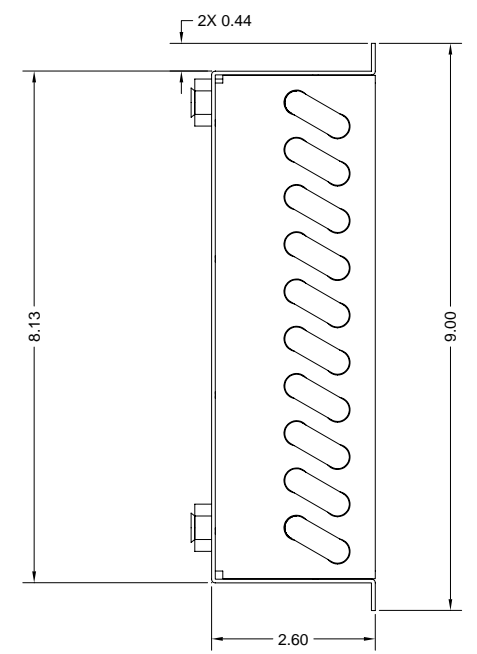
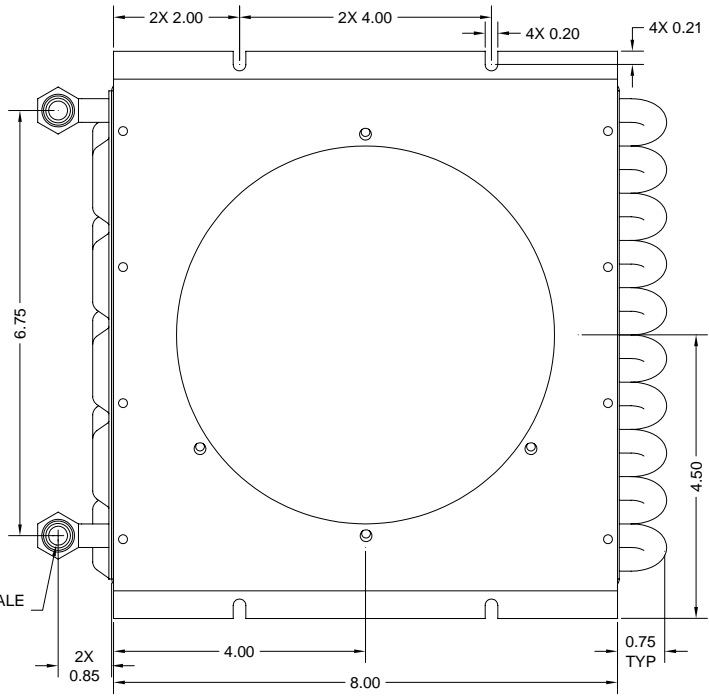
2

1

REVISIONS				
ZONE	REV	DESCRIPTION	DATE	APPROVED
	A	RELEASED	08/22/2000	D. SAVOY



(2) 3/8 "AN" FEMALE FITTING



THERMATRON ENGINEERING, INC.  
 HEAT EXCHANGER  
 MODEL NO. \_\_\_\_\_  
 SERIAL NO. \_\_\_\_\_

APPLY LABEL WHERE SHOWN  
 MARK MODEL AND SERIAL NUMBERS

NOTES:

- 1 WELD PER A8381
- 2 PRESSURE TEST 150 PSI N2 UNDER WATER
- 3 BRIGHTEN FINs PRIOR TO FRAME ASS'Y PER. TEP 101-06
- 4 INTERNAL FLUSH AND TUBE TREAT PER. TEP 101-07

<b>CONFIDENTIAL INFORMATION</b> THIS DRAWING CONTAINS INFORMATION THAT IS RESTRICTED. USE OF THE INFORMATION CONTAINED HEREIN WITHOUT THE EXPRESS CONSENT OF THERMATRON ENGINEERING IS STRICTLY PROHIBITED.	DRAWN BY: B. RABBITT	DATE: 08/22/2000	<b>THERMATRON ENGINEERING Inc.</b> 387 LOWELL STREET, METHUEN MA 01844 * PHONE: 978-687-9844 FAX: 978-687-9844 E-Mail: INFO@THERMATRONENG.COM * Web Site: HTTP://WWW.THERMATRONENG.COM	
	CHECKED BY: D. SAVOY	DATE: 08/22/2000		
	APPROVED BY: B. RABBITT	DATE: 08/22/2000	TITLE: HEAT EXCHANGER	
	MATERIAL: CU FIN, STAINLESS TUBE FINISH.	UNLESS OTHERWISE SPECIFIED, DIMENSIONS ARE IN INCHES.	CODE INVENT. No. 1GQ06	DRAWING No. 732TNP0
REFERENCE No.	TOLERANCE DECIMALS: .XX ± 0.015 .XXX ± 0.010	THIRD ANGLE PROJECTION	SCALE: 1:1	
NEXT ASSEMBLY.	ANGLES: ± 1/2	SHEET: 1 OF 1		

4

3

2

1