

CITIZEN®



Innovation,
powered by willpower.



CA4011-55L

TI-IP

Eco-Drive



Rigid Bar

YE24KA1

YE24KA2

UL US

TÜVRheinland

SGS

FC

RoHS



Shenzhen LingBenYang Co.,Ltd.

17D Block A, Qingtianhuating Building, Shangbao Road, Futian District, Shenzhen China, 518034

Tel: +86-755-8354-4570

Fax: +86-755-6136-8278

Web: www.szlbv.cn

Email: info@szlbv.cn



Application

Apply to 15-40 cm depth double-sided light box or 6-20 cm depth single-sided light box at airports, metros, banks, buildings and shopping malls, etc.

Features

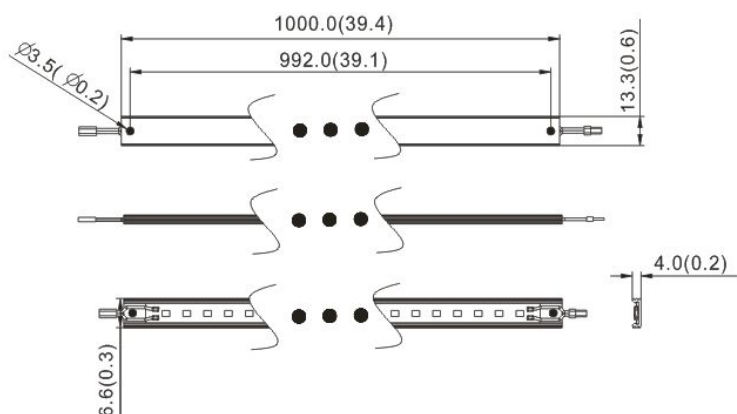
1. Adopting high efficiency SMD2835 LED,high light efficiency and brightness.
2. With aluminum profile for better heat dissipation..
3. Constant voltage, work stable and safe.
4. Fixing with self-tapping screws,convenient and safe.
5. No lighting degradation in 1000 hours when working in rated conditions,lifespan is over 50 000 hours.
6. CE, RoHS and UL certified.

Parameters

Items	Parameters	
Part Number	YE24KA1	YE24KA2
LED Type	SMD2835	SMD2835
LEDs/m	24	24
CCT(K)	6500-8000/8000-10000	
Beaming Angle(°)	120	
CRI(Ra)	≥75	
Luminous Flux(lm)	960	555
Voltage(V)	DC12	
Power(W)	10	5.76
Dimension(mm)	1000*13.3*4.0	
Weight(g)	83.5	
Working Tem.(°C)	-25~+60	
Storage Tem.(°C)	-25~+70	
Protection Grade	IP33	

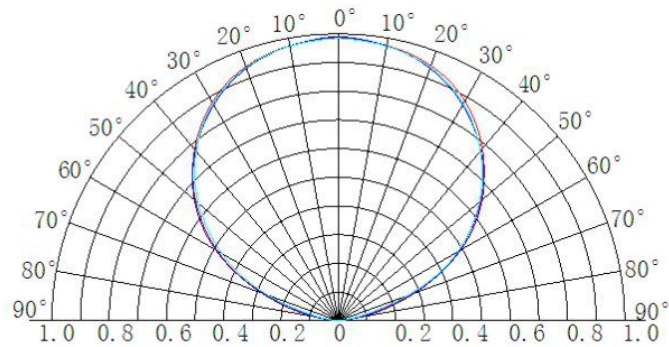
Dimension

Unit:mm



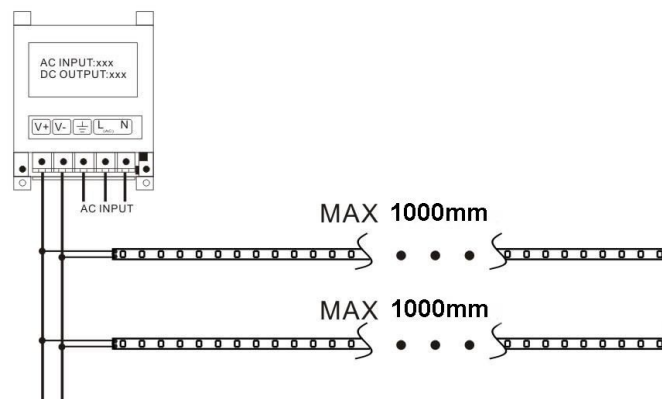


Beaming Angle

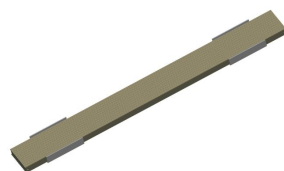


Wire Connection

White&Red wire to positive
White&Black wire to negative



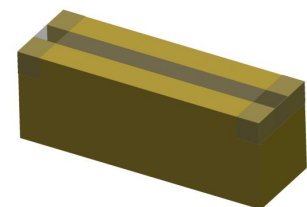
Packing



15pcs to 1 batch



10 batches in a carton



150pcs in a carton

Packing Specification

1. PVC slot adopted
2. Packing information

Model	YE24KA1	YE24KA2
Carton dimension(mm)	1290*148*135	
Batches per carton(pcs)	10	
Quantity per batch(pcs)	15	
Net Weight(kg)	12.54 (± 10%)	
Gross Weight(kg)	13.99 (± 10%)	

3. For the packing info of the un-mentioned strips, please refer to those of the similar product.
4. Due to the packing manner difference, please adhere to the original products in case of discrepancy found between the picture and actual product.



Warning

1. Disassembling or modifying the product is forbidden.
2. Installation with power on is forbidden.
3. Any organic solvent chemical is forbidden.
4. Acidic or alkaline adhesive is forbidden when install, neutral glass cement could be used for installation purpose, make it dry in opening sites for four hours.
5. Isolation and corrosion prevention on all wiring points and wire ends.
6. Make sure the power wire is big enough and ensure the voltage and connection are all correct before power on.
7. This product can not be exposed outdoor.
8. Installation, maintenance shall be done by professional staff.
9. 1M in a serial connection maximum.
10. The power wire between power supplier and module should be less than two meters to keep the same brightness on all parts.

Declaration

1. Warranty: 3 years.
2. To ensure the safety, the broken wires need to be changed by the manufacturer or the service agent, or by the staff with the similar qualification.
3. The given data in the specification is the laboratory data, there may be discrepancy found in the actual products.
4. The given drawings in the specification are only for reference, there may be discrepancy found in the actual products.
5. The products are subject to change without prior notification.

