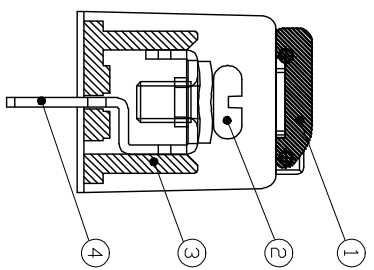
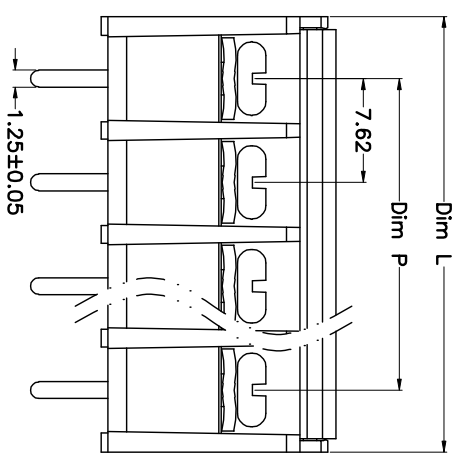
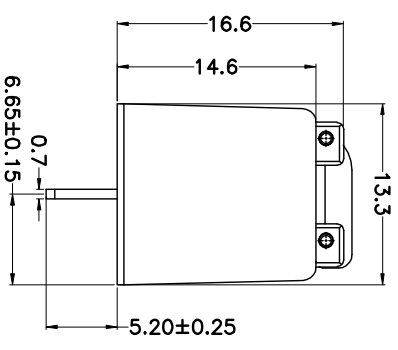
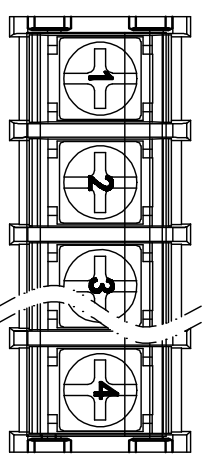
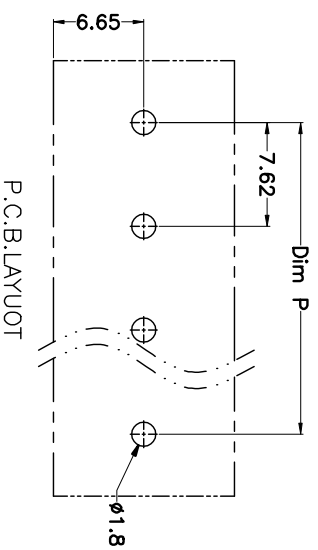


| REV. | DESCRIPTION | DATE | DRAWN | APPROVED |
|------|-------------|-----------|-------|----------|
| A1 | DWG.REL | 2016/10/7 | FANG | YANG |



N=Number of Poles
Dim P=(N-1)x7.62
Dim L=Nx7.62+1.5

| Poles | Dim P | Dim L |
|--------|-------|-------|
| 2-6P | ±0.10 | ±0.15 |
| 7-12P | ±0.20 | ±0.20 |
| 13-18P | ±0.25 | ±0.30 |
| 19-24P | ±0.30 | ±0.40 |



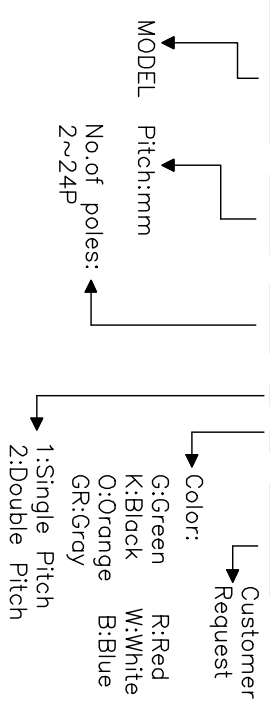
- Material
 - ØCover : PA66,UL94V-0
 - ØScrews : M3.0 steel, Ni plated
 - ØHousing : PA66,UL94V-0
 - ØTerminal : Brass, Tin plated

- Electrical UL IEC
 - Rated voltage : 300V 250V
 - Rated current : 15A 24A
 - Insulation resistance: 500MΩ/DC500V
 - Withstanding Voltage : AC2000V/1min
 - Wire range: 22-14AWG 2.5mm²

- Mechanical
 - Operating temperature:-40°C~+105°C
 - Soldering temperature:250°C±5/5sec
 - Torque: 0.5N.m (4.43lb.in)

HOW TO ORDER

KF-25CM-7.62-XXP-1 X-XXXXX



| GENERAL TOLERANCE | ANGLE TOLERANCE |
|--------------------------------|-----------------------------|
| X. ±0.5 X. ±0.3 .XX ±0.1 | X. ±5° X. ±3° .XX ±1° |
| DRAWING TYPE CUSTOMER | SHEET 1 OF 1 |
| SCALE 1:1 | DRAWING NO. XP0012016-xxxx |

PROJECTION TITLE KF-25CM-7.62-XXP

UNITS mm

SHEET SIZE A4 SERIES KF-25CM

KF 慈溪市凯峰电子有限公司
KAIFENG ELECTRONIC CIXI KAIFENG ELECTRONIC CO.,LTD