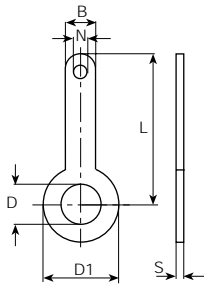


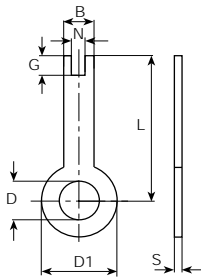
Lötösen

Cosses à souder

Soldering tags

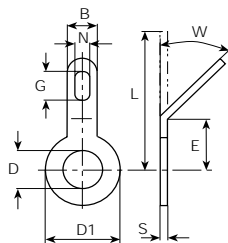


D mm	L mm	D1 mm	B mm	N mm	S mm	Werkstoff Matière Material	Stand- Packg.	Artikel-Nr. Numéro d'article Part-No.
2.7	6.5	5	3	∅1.6	0.4	MS	5000	2000.6()
3.2	6.5	5	3	∅1.8	0.3	MS	5000	2014.6()
	6.5	5	3.2	∅1.6	0.3	MS	5000	2001.6()
3.6	6	6	3.2	∅1.6	0.3	MS	2000	2020.6()
5.5	18	9	4	∅1	0.4	MS	1000	2010.6()
6.4	23	10	4	∅1	0.4	MS	1000	2012.6()
8.2	14	12	4	∅1.7	0.3	MS	1000	2053.6()
	14	12	4	∅1.7	0.5	MS	1000	205305.6()
9.6	14	12	4	∅1.7	0.5	MS	1000	2051.6()
18	27.5	25	2.8	∅1	0.5	MS	200	2083.6()
19	36	36	5	∅2.5	0.5	MS	1000	2032.6()



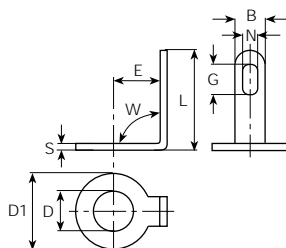
D mm	L mm	D1 mm	B mm	N mm	G mm	S mm	Werkstoff Matière Material	Stand- Packg.	Artikel-Nr. Numéro d'article Part-No.
3.2	29	5.5	1.5	-	-	0.2	BZ	2000	205602.2()
	29	5.5	1.5	-	-	0.5	MS	2000	2056.6()
	36	5.5	1.5	-	-	0.5	MS	1000	2057.6()
5	18	8	4	-	-	0.3	MS	2000	2063.6()
5.5	21	13	5	2	3	0.8	MS	1000	2066.6()

30° + 45°



D mm	W	L mm	E mm	D1 mm	B mm	N mm	G mm	S mm	Werkstoff Matière Material	Stand- Packg.	DIN 41496	Artikel-Nr. Numéro d'article Part-No.
3.15	30°	9	3.7	6	3	∅1.8	-	0.5	MS	5000		204030.6()
	45°	9	3.7	6	3	1.7	3.2	0.5	MS	5000		204145.6()
3.2	45°	9	3.2	5.5	3	1.7	3.2	0.3	MS	5000		200345.6()
	45°	12	4.3	5.5	3	1.7	3.2	0.3	MS	5000		20060345.6()
	45°	12	4.3	5.5	3	1.7	3.2	0.5	MS	5000	B1-3x12	200645.6()
4.3	45°	12	5.5	6.5	3	1.7	3.2	0.5	MS	2000	B1-4x12	200745.6()

90°



D mm	W	L mm	E mm	D1 mm	B mm	N mm	G mm	S mm	Werkstoff Matière Material	Stand- Packg.	Artikel-Nr. Numéro d'article Part-No.
3.15	90°	5.5	3.7	6	3	∅1.8	-	0.5	MS	5000	204090.6()
3.2	90°	6	3.2	5.5	3	1.7	3.2	0.3	MS	5000	200390.6()
	90°	8	4.3	5.5	3	1.7	3.2	0.3	MS	5000	20060390.6()
	90°	8	4.3	5.5	3	1.7	3.2	0.5	MS	5000	200690.6()
4.3	90°	7	5.5	6.5	3	1.7	3.2	0.5	MS	2000	200790.6()
	90°	7	5.5	6.5	3	1.7	3.2	0.5	NS	2000	200790.7()